

Datasheet for ABIN2729847

**Proline Rich 15 Protein (PRR15) (DYKDDDDK Tag)**[Go to Product page](#)**1** Image

## Overview

|                               |   |
|-------------------------------|---|
| Quantity:                     | 20 µg   |
| Target:                       | Proline Rich 15 (PRR15)                                     |
| Origin:                       | Human   |
| Source:                       | Insect cells (Sf9)  |
| Protein Type:                 | Recombinant   |
| Purification tag / Conjugate: | This Proline Rich 15 protein is labelled with DYKDDDDK Tag. |
| Application:                  | Antibody Production (AbP), Standard (STD)                   |

## Product Details

|                  |   |
|------------------|---|
| Characteristics: | <ul style="list-style-type: none"><li>• Recombinant human PRR15 (full length, C-term DDK tag) protein expressed in Sf9 cells.</li><li>• Produced with end-sequenced ORF clone</li></ul> |
| Purity:          | > 80 % as determined by SDS-PAGE and Coomassie blue staining  |

## Target Details

|                   |  |
|-------------------|--|
| Target:           | Proline Rich 15 (PRR15)                  |
| Alternative Name: | Prr15 ( <a href="#">PRR15 Products</a> ) |
| Molecular Weight: | 13.7 kDa                                 |
| NCBI Accession:   | <a href="#">NP_787083</a>                |

## Application Details

---

Application Notes: Recombinant human proteins can be used for:  
Native antigens for optimized antibody production  
Positive controls in ELISA and other antibody assays

---

Comment: The tag is located at the C-terminal.

---

Restrictions: For Research Use only

---

## Handling

---

Concentration: 50 µg/mL

---

Buffer: 50 mM Tris-HCl, pH 8.0, 100 mM glycine, 10 % glycerol. Store at -80C. Avoid repeated freeze-thaw cycles. Stable for at least 3 months from receipt of products under proper storage and handling conditions.

---

Storage: -80 °C

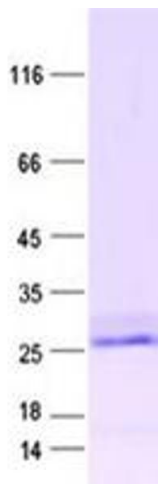
---

Storage Comment: Store at -80°C. Thaw on ice, aliquot to individual single-use tubes, and then re-freeze immediately. Only 2-3 freeze thaw cycles are recommended.

---

## Images

---



### Western Blotting

**Image 1.** Validation with Western Blot