

Datasheet for ABIN2729867

PRY Protein (His tag)[Go to Product page](#)**1** Image

Overview

Quantity:	50 µg
Target:	PRY
Origin:	Human
Source:	Escherichia coli (E. coli)
Protein Type:	Recombinant
Purification tag / Conjugate:	This PRY protein is labelled with His tag.
Application:	Antibody Production (AbP), Standard (STD)

Product Details

Characteristics:	<ul style="list-style-type: none">• Recombinant human PRY (full length, N-term HIS tag) protein expressed in E. coli.• Produced with end-sequenced ORF clone
Purity:	> 80 % as determined by SDS-PAGE and Coomassie blue staining

Target Details

Target:	PRY
Alternative Name:	Pry (PRY Products)
Background:	This gene is located in the nonrecombining portion of the Y chromosome, and expressed specifically in testis. It encodes a protein which has a low degree of similarity to protein tyrosine phosphatase, non-receptor type 13. Two nearly identical copies of this gene exist within a palindromic region. This record represents the more centromeric copy.
Molecular Weight:	16.3 kDa

Target Details

NCBI Accession: [NP_001002758](#)

Application Details

Application Notes: Recombinant human proteins can be used for:
Native antigens for optimized antibody production
Positive controls in ELISA and other antibody assays

Comment: The tag is located at the N-terminal.

Restrictions: For Research Use only

Handling

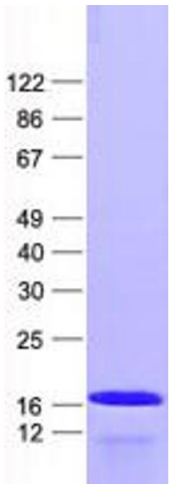
Concentration: 50 µg/mL

Buffer: 25 mM Tris, pH 8.0, 150 mM NaCl, 10 % glycerol, 1 % Sarkosyl. Store at -80°C. Avoid repeated freeze-thaw cycles. Stable for at least 3 months from receipt of products under proper storage and handling conditions.

Storage: -80 °C

Storage Comment: Store at -80°C. Thaw on ice, aliquot to individual single-use tubes, and then re-freeze immediately. Only 2-3 freeze thaw cycles are recommended.

Images



Western Blotting

Image 1. Validation with Western Blot