



[Go to Product page](#)

Datasheet for ABIN2729925

## PSMB2 Protein (Myc-DYKDDDDK Tag)

### 1 Image

#### Overview

|                               |   |
|-------------------------------|---|
| Quantity:                     | 20 µg   |
| Target:                       | PSMB2   |
| Origin:                       | Human   |
| Source:                       | HEK-293 Cells   |
| Protein Type:                 | Recombinant   |
| Purification tag / Conjugate: | This PSMB2 protein is labelled with Myc-DYKDDDDK Tag. |
| Application:                  | Antibody Production (AbP), Standard (STD)             |

#### Product Details

- Characteristics:
- Recombinant human PSMB2 protein expressed in HEK293 cells.
  - Produced with end-sequenced ORF clone

Purity: > 80 % as determined by SDS-PAGE and Coomassie blue staining

#### Target Details

Target: PSMB2

Alternative Name: Psmb2 ([PSMB2 Products](#))

Background: The proteasome is a multicatalytic proteinase complex which is characterized by its ability to cleave peptides with Arg, Phe, Tyr, Leu, and Glu adjacent to the leaving group at neutral or slightly basic pH . The proteasome has an ATP-dependent proteolytic activity. This subunit has a trypsin-like activity. [UniProtKB/Swiss-Prot Function]

Molecular Weight: 22.7 kDa

## Target Details

NCBI Accession: [NP\\_002785](#)

Pathways: [Mitotic G1-G1/S Phases](#), [DNA Replication](#), [Synthesis of DNA](#)

## Application Details

Application Notes: Recombinant human proteins can be used for:  
Native antigens for optimized antibody production  
Positive controls in ELISA and other antibody assays

Comment: The tag is located at the C-terminal.

Restrictions: For Research Use only

## Handling

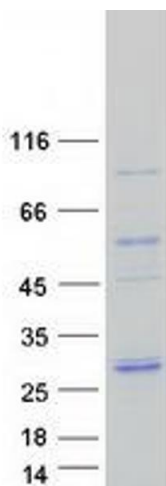
Concentration: 50 µg/mL

Buffer: 25 mM Tris.HCl, pH 7.3, 100 mM glycine, 10 % glycerol.

Storage: -80 °C

Storage Comment: Store at -80°C. Thaw on ice, aliquot to individual single-use tubes, and then re-freeze immediately. Only 2-3 freeze thaw cycles are recommended.

## Images



### Western Blotting

**Image 1.** Validation with Western Blot