

Datasheet for ABIN2729958

anti-PSMC3 antibody

3 Images

[Go to Product page](#)

Overview

Quantity:	0.1 mL
Target:	PSMC3
Reactivity:	Human
Host:	Mouse
Clonality:	Monoclonal
Application:	Western Blotting (WB), Immunofluorescence (IF), Flow Cytometry (FACS)

Product Details

Immunogen:	Full length human recombinant protein of human PSMC3 (NP_002795) produced in HEK293T cell.
Clone:	1G4
Isotype:	IgG2a
Purification:	Purified from mouse ascites fluids by affinity chromatography

Target Details

Target:	PSMC3
Alternative Name:	PSMC3 (PSMC3 Products)
Molecular Weight:	49.0 kDa
Gene ID:	5702
NCBI Accession:	NM_002804

Target Details

HGNC:	5702
Pathways:	Mitotic G1-G1/S Phases , DNA Replication , Synthesis of DNA , Ubiquitin Proteasome Pathway

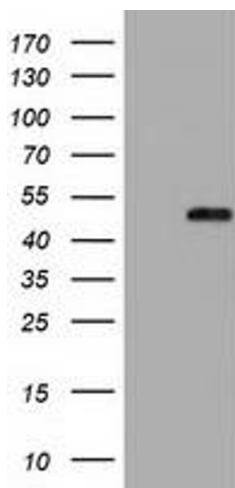
Application Details

Application Notes:	WB 1:2000, IF 1:100, FLOW 1:100
Comment:	The concentration of the product may vary between diferrent lots.
Restrictions:	For Research Use only

Handling

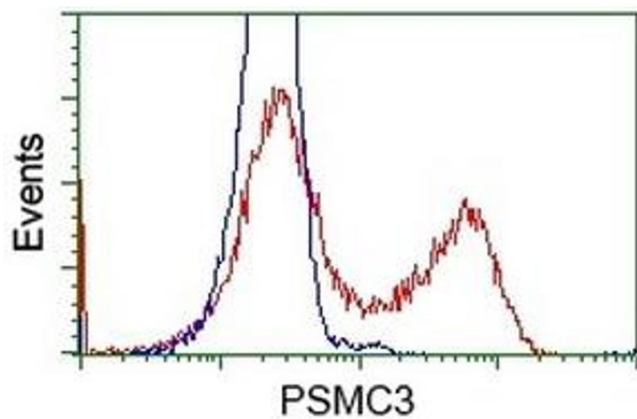
Format:	Liquid
Concentration:	0.5-1.0 mg/mL
Buffer:	PBS (pH 7.3) containing 1 % BSA, 50 % glycerol and 0.02 % sodium azide.
Preservative:	Sodium azide
Precaution of Use:	This product contains sodium azide: a POISONOUS AND HAZARDOUS SUBSTANCE which should be handled by trained staff only.

Images



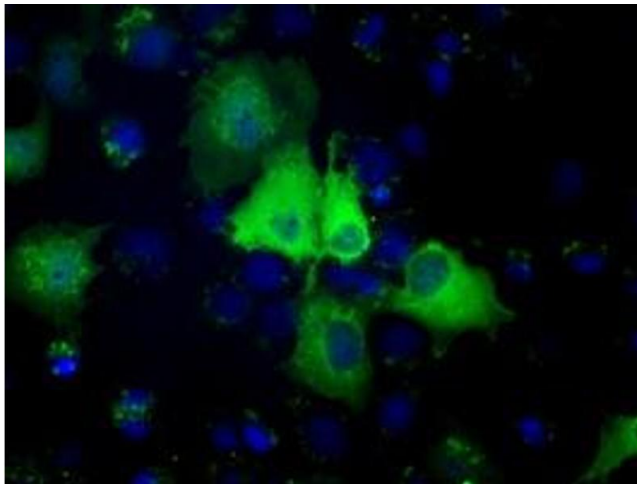
Western Blotting

Image 1. HEK293T cells were transfected with the pCMV6-ENTRY control (Left lane) or pCMV6-ENTRY PSMC3 (Right lane) cDNA for 48 hrs and lysed. Equivalent amounts of cell lysates (5 µg per lane) were separated by SDS-PAGE and immunoblotted with anti-PSMC3.



Flow Cytometry

Image 2. HEK293T cells transfected with either RC201790 overexpress plasmid (Red) or empty vector control plasmid (Blue) were immunostained by anti-PSMC3 antibody (ABIN2453538), and then analyzed by flow cytometry.



Immunofluorescence

Image 3. Anti-PSMC3 mouse monoclonal antibody (ABIN2453538) immunofluorescent staining of COS7 cells transiently transfected by pCMV6-ENTRY PSMC3 (RC201790).