

Datasheet for ABIN2729974

**PSMD10 Protein (Transcript Variant 2) (Myc-DYKDDDDK Tag)**[Go to Product page](#)**1** Image

## Overview

Quantity:	20 µg
Target:	PSMD10
Protein Characteristics:	Transcript Variant 2
Origin:	Human
Source:	HEK-293 Cells
Protein Type:	Recombinant
Purification tag / Conjugate:	This PSMD10 protein is labelled with Myc-DYKDDDDK Tag.
Application:	Antibody Production (AbP), Standard (STD)

## Product Details

Characteristics:	<ul style="list-style-type: none"><li>• Recombinant human PSMD10 / Gankyrin (transcript variant 2) protein expressed in HEK293 cells.</li><li>• Produced with end-sequenced ORF clone</li></ul>
Purity:	> 80 % as determined by SDS-PAGE and Coomassie blue staining

## Target Details

Target:	PSMD10
Alternative Name:	Psm10,gankyrin ( <a href="#">PSMD10 Products</a> )
Background:	This gene encodes a subunit of the PA700/19S complex, which is the regulatory component of the 26S proteasome. The 26S proteasome complex is required for ubiquitin-dependent protein degradation. This protein is a non-ATPase subunit that may be involved in protein-protein

## Target Details

interactions. Aberrant expression of this gene may play a role in tumorigenesis. Two transcripts encoding different isoforms have been described. Pseudogenes have been identified on chromosomes 3 and 20.[provided by RefSeq, Mar 2011].

Molecular Weight: 16 kDa

NCBI Accession: [NP\\_736606](#)

Pathways: [Mitotic G1-G1/S Phases](#), [DNA Replication](#), [Maintenance of Protein Location](#), [Synthesis of DNA](#), [Ubiquitin Proteasome Pathway](#)

## Application Details

Application Notes: Recombinant human proteins can be used for:  
Native antigens for optimized antibody production  
Positive controls in ELISA and other antibody assays

Comment: The tag is located at the C-terminal.

Restrictions: For Research Use only

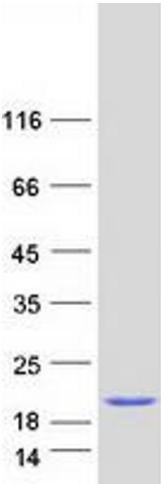
## Handling

Concentration: 50 µg/mL

Buffer: 25 mM Tris.HCl, pH 7.3, 100 mM glycine, 10 % glycerol.

Storage: -80 °C

Storage Comment: Store at -80°C. Thaw on ice, aliquot to individual single-use tubes, and then re-freeze immediately. Only 2-3 freeze thaw cycles are recommended.



Western Blotting

**Image 1.** Validation with Western Blot