

Datasheet for ABIN2729975

PSMD10 Protein (Transcript Variant 1)**1** Image[Go to Product page](#)

Overview

Quantity:	10 µg
Target:	PSMD10
Protein Characteristics:	Transcript Variant 1
Origin:	Human
Source:	Escherichia coli (E. coli)
Protein Type:	Recombinant
Application:	Antibody Production (AbP), Standard (STD)

Product Details

Characteristics:	<ul style="list-style-type: none">• Recombinant human PSMD10 / Gankyrin (transcript variant 1) protein expressed in E. coli.• Produced with end-sequenced ORF clone
Purity:	> 95 % as determined by SDS-PAGE and Coomassie blue staining
Endotoxin Level:	< 0.1 EU per µg protein as determined by LAL test

Target Details

Target:	PSMD10
Alternative Name:	Psm10,gankyrin (PSMD10 Products)
Background:	This gene encodes a subunit of the PA700/19S complex, which is the regulatory component of the 26S proteasome. The 26S proteasome complex is required for ubiquitin-dependent protein degradation. This protein is a non-ATPase subunit that may be involved in protein-protein interactions. Aberrant expression of this gene may play a role in tumorigenesis. Two transcripts

Target Details

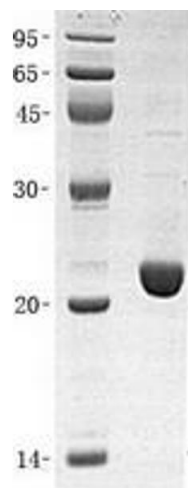
	encoding different isoforms have been described. Pseudogenes have been identified on chromosomes 3 and 20.[provided by RefSeq, Mar 2011].
Molecular Weight:	24.4 kDa
NCBI Accession:	NP_002805
Pathways:	Mitotic G1-G1/S Phases , DNA Replication , Maintenance of Protein Location , Synthesis of DNA , Ubiquitin Proteasome Pathway

Application Details

Application Notes:	Recombinant human proteins can be used for: Native antigens for optimized antibody production Positive controls in ELISA and other antibody assays
Restrictions:	For Research Use only

Handling

Concentration:	50 µg/mL
Buffer:	20 mM Phosphate buffer, 150 mM NaCl, 10 % Glycerol, pH 7.4. Avoid repeated freeze-thaw cycles. Stable for at least 3 months from receipt of products under proper storage and handling conditions.
Storage:	-80 °C
Storage Comment:	Store at -80°C. Thaw on ice, aliquot to individual single-use tubes, and then re-freeze immediately. Only 2-3 freeze thaw cycles are recommended.



Western Blotting

Image 1. Validation with Western Blot