

Datasheet for ABIN2730083

**PTK6 Protein (Myc-DYKDDDDK Tag)****2** Images[Go to Product page](#)

## Overview

Quantity:	20 µg
Target:	PTK6
Origin:	Human
Source:	HEK-293 Cells
Protein Type:	Recombinant
Biological Activity:	Active
Purification tag / Conjugate:	This PTK6 protein is labelled with Myc-DYKDDDDK Tag.
Application:	Functional Studies (Func), Antibody Production (AbP), Protein Interaction (PI), Standard (STD)

## Product Details

Specificity:	Optimal preservation of protein structure, post-translational modifications and functions.
Characteristics:	<ul style="list-style-type: none"><li>• Recombinant human PTK6 / BRK protein expressed in HEK293 cells.</li><li>• Produced with end-sequenced ORF clone</li><li>• Tested for bioactivity.</li></ul>
Purity:	> 80 % as determined by SDS-PAGE and Coomassie blue staining
Biological Activity Comment:	PTK6 activity verified in a biochemical assay;PTK6 activity verified in a biochemical assay:

## Target Details

Target:	PTK6
Alternative Name:	Ptk6,brk ( <a href="#">PTK6 Products</a> )

## Target Details

Background:	Isoform 2 inhibits PTK6 phosphorylation and PTK6 association with other tyrosine-phosphorylated proteins. [UniProtKB/Swiss-Prot Function]
Molecular Weight:	51.7 kDa
NCBI Accession:	<a href="#">NP_005966</a>

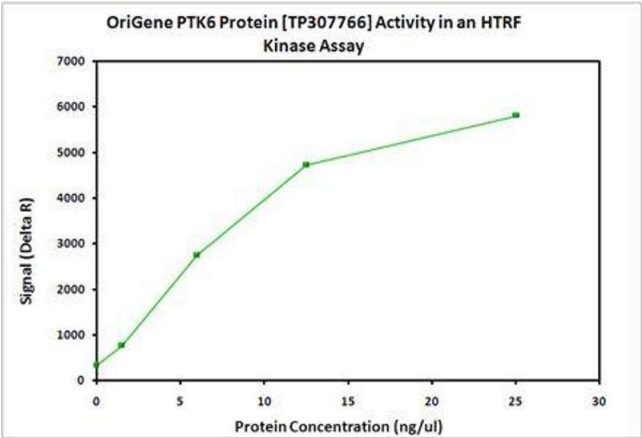
## Application Details

Application Notes:	Recombinant human proteins can be used for: Native antigens for optimized antibody production Positive controls in ELISA and other antibody assays Protein-protein interaction In vitro biochemical assays and cell-based functional assays
Comment:	The tag is located at the C-terminal.
Restrictions:	For Research Use only

## Handling

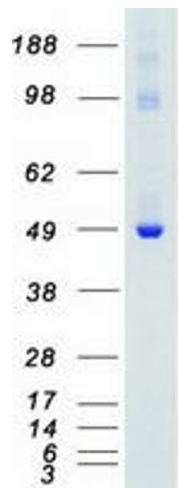
Concentration:	> 50 µg/mL
Buffer:	25 mM Tris.HCl, pH 7.3, 100 mM glycine, 10 % glycerol.
Storage:	-80 °C
Storage Comment:	Store at -80°C. Thaw on ice, aliquot to individual single-use tubes, and then re-freeze immediately. Only 2-3 freeze thaw cycles are recommended.

## Images



### Activity Assay

**Image 1.** Bioactivity measured with Activity Assay



Western Blotting

**Image 2.** Validation with Western Blot