

Datasheet for ABIN2730172

**RFP Protein (His tag)****1** Image[Go to Product page](#)

## Overview

Quantity:	0.25 mg
Target:	RFP
Origin:	E. coli
Source:	Escherichia coli (E. coli)
Protein Type:	Recombinant
Purification tag / Conjugate:	This RFP protein is labelled with His tag.
Application:	Antibody Production (AbP), Standard (STD)

## Product Details

Characteristics:	<ul style="list-style-type: none"><li>• Recombinant human Purified fluorescent protein mKate, with N-terminal HIS tag, expressed in E. coli, 250 µg (N-term HIS tag) protein expressed in E. coli.</li><li>• Produced with end-sequenced ORF clone</li></ul>
Purity:	> 80 % as determined by SDS-PAGE and Coomassie blue staining

## Target Details

Target:	RFP
Alternative Name:	Purified Fluorescent Protein MKate ( <a href="#">RFP Products</a> )
Molecular Weight:	26.5 kDa

## Application Details

Application Notes:	Recombinant human proteins can be used for:
--------------------	---

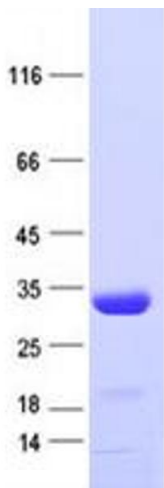
Application Details

	Native antigens for optimized antibody production
	Positive controls in ELISA and other antibody assays
Comment:	The tag is located at the N-terminal.
Restrictions:	For Research Use only

Handling

Concentration:	50 µg/mL
Buffer:	PBS, pH 7.4, 10 % glycerol.
Storage:	-80 °C
Storage Comment:	Store at -80°C. Thaw on ice, aliquot to individual single-use tubes, and then re-freeze immediately. Only 2-3 freeze thaw cycles are recommended.

Images



Western Blotting

**Image 1.** Validation with Western Blot