

Datasheet for ABIN2730296

**RAB21 Protein (Myc-DYKDDDDK Tag)****1** Image[Go to Product page](#)

## Overview

Quantity:	20 µg
Target:	RAB21
Origin:	Human
Source:	HEK-293 Cells
Protein Type:	Recombinant
Purification tag / Conjugate:	This RAB21 protein is labelled with Myc-DYKDDDDK Tag.
Application:	Antibody Production (AbP), Standard (STD)

## Product Details

Characteristics:	<ul style="list-style-type: none"><li>• Recombinant human RAB21 protein expressed in HEK293 cells.</li><li>• Produced with end-sequenced ORF clone</li></ul>
Purity:	> 80 % as determined by SDS-PAGE and Coomassie blue staining

## Target Details

Target:	RAB21
Alternative Name:	Rab21 ( <a href="#">RAB21 Products</a> )
Background:	This gene belongs to the Rab family of monomeric GTPases, which are involved in the control of cellular membrane traffic. The encoded protein plays a role in the targeted trafficking of integrins via its association with integrin alpha tails. As a consequence, the encoded protein is involved in the regulation of cell adhesion and migration. Expression of this gene is associated with a poor prognosis for glioma patients. This gene is downregulated by the tumor suppressor

## Target Details

	miR-200b, and miRNA-200b is itself downregulated in glioma tissues.
Molecular Weight:	24.2 kDa
NCBI Accession:	<a href="#">NP_055814</a>

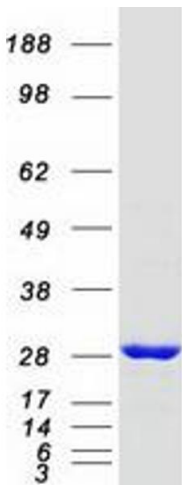
## Application Details

Application Notes:	Recombinant human proteins can be used for: Native antigens for optimized antibody production Positive controls in ELISA and other antibody assays
Comment:	The tag is located at the C-terminal.
Restrictions:	For Research Use only

## Handling

Concentration:	50 µg/mL
Buffer:	25 mM Tris.HCl, pH 7.3, 100 mM glycine, 10 % glycerol.
Storage:	-80 °C
Storage Comment:	Store at -80°C. Thaw on ice, aliquot to individual single-use tubes, and then re-freeze immediately. Only 2-3 freeze thaw cycles are recommended.

## Images



### Western Blotting

**Image 1.** Validation with Western Blot