



[Go to Product page](#)

Datasheet for ABIN2730382  
**anti-RABL2A antibody**

3 Images

### Overview

Quantity:	0.1 mL
Target:	RABL2A
Reactivity:	Human, Monkey
Host:	Mouse
Clonality:	Monoclonal
Application:	Western Blotting (WB), Flow Cytometry (FACS), Immunofluorescence (IF)

### Product Details

Immunogen:	Full length human recombinant protein of human RABL2A (NP_009013) produced in HEK293T cell.
Clone:	4A8
Isotype:	IgG1
Purification:	Purified from mouse ascites fluids by affinity chromatography

### Target Details

Target:	RABL2A
Alternative Name:	RABL2A ( <a href="#">RABL2A Products</a> )
Molecular Weight:	25.9 kDa
Gene ID:	11159
NCBI Accession:	<a href="#">NM_007082</a>

## Target Details

---

HGNC: 11159

## Application Details

---

Application Notes: WB 1:500~2000, IF 1:100, FLOW 1:100

Comment: The concentration of the product may vary between different lots.

Restrictions: For Research Use only

## Handling

---

Format: Liquid

Concentration: 0.5-1.0 mg/mL

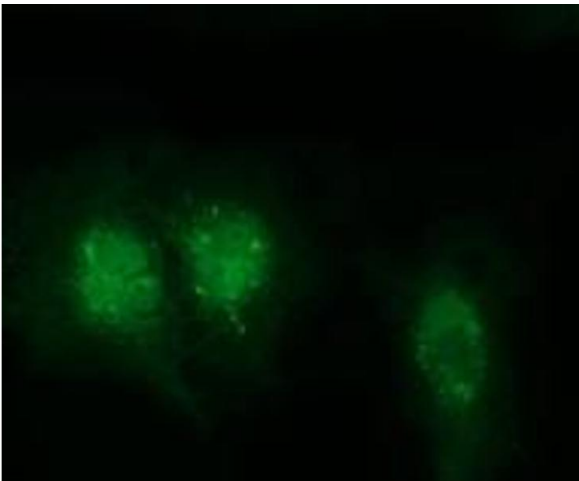
Buffer: PBS (PH 7.3) containing 1 % BSA, 50 % glycerol and 0.02 % sodium azide.

Preservative: Sodium azide

Precaution of Use: This product contains sodium azide: a POISONOUS AND HAZARDOUS SUBSTANCE which should be handled by trained staff only.

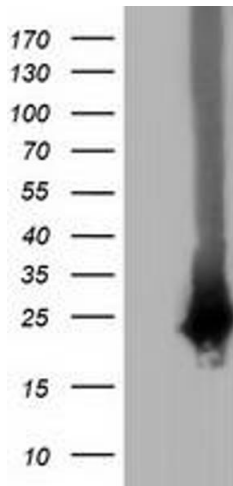
## Images

---



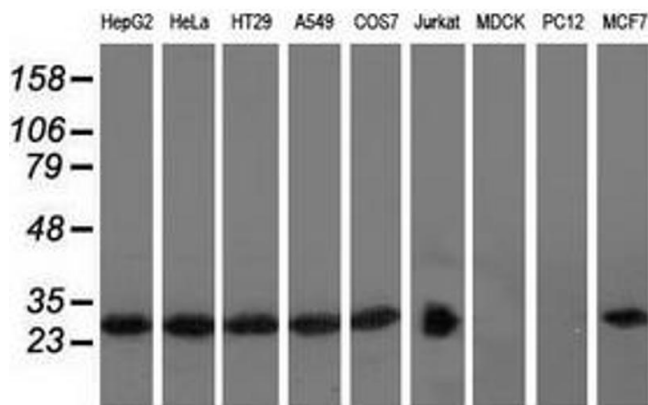
### Immunofluorescence

**Image 1.** Anti-RABL2A mouse monoclonal antibody (ABIN2453574) immunofluorescent staining of COS7 cells transiently transfected by pCMV6-ENTRY RABL2A (RC211854).



### Western Blotting

**Image 2.** HEK293T cells were transfected with the pCMV6-ENTRY control (Left lane) or pCMV6-ENTRY RABL2A (Right lane) cDNA for 48 hrs and lysed. Equivalent amounts of cell lysates (5 µg per lane) were separated by SDS-PAGE and immunoblotted with anti-RABL2A.



### Western Blotting

**Image 3.** Western blot analysis of extracts (35 µg) from 9 different cell lines by using anti-RABL2A monoclonal antibody.