

Datasheet for ABIN2730413

**RAD51 Homolog B Protein (Rad51B) (His tag)**[Go to Product page](#)**1** Image

## Overview

Quantity:	50 µg
Target:	RAD51 Homolog B (Rad51B)
Origin:	Human
Source:	Escherichia coli (E. coli)
Protein Type:	Recombinant
Purification tag / Conjugate:	This RAD51 Homolog B protein is labelled with His tag.
Application:	Antibody Production (AbP), Standard (STD)

## Product Details

Characteristics:	<ul style="list-style-type: none"><li>• Recombinant human RAD51L1 (N-term HIS tag, transcript variant 3) protein expressed in E. coli.</li><li>• Produced with end-sequenced ORF clone</li></ul>
Purity:	> 80 % as determined by SDS-PAGE and Coomassie blue staining

## Target Details

Target:	RAD51 Homolog B (Rad51B)
Alternative Name:	Rad51l1 ( <a href="#">Rad51B Products</a> )
Background:	The protein encoded by this gene is a member of the RAD51 protein family. RAD51 family members are evolutionarily conserved proteins essential for DNA repair by homologous recombination. This protein has been shown to form a stable heterodimer with the family member RAD51C, which further interacts with the other family members, such as RAD51,

## Target Details

XRCC2, and XRCC3. Overexpression of this gene was found to cause cell cycle G1 delay and cell apoptosis, which suggested a role of this protein in sensing DNA damage. Rearrangements between this locus and high mobility group AT-hook 2 (HMGA2, GeneID 8091) have been observed in uterine leiomyomata.

Molecular Weight: 42 kDa

NCBI Accession: [NP\\_598193](#)

Pathways: [DNA Damage Repair](#)

## Application Details

Application Notes: Recombinant human proteins can be used for:  
Native antigens for optimized antibody production  
Positive controls in ELISA and other antibody assays

Comment: The tag is located at the N-terminal.

Restrictions: For Research Use only

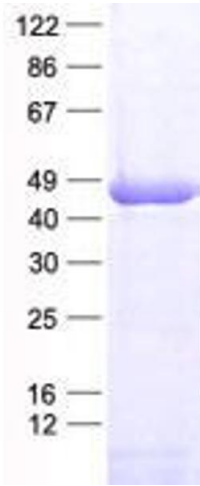
## Handling

Concentration: 50 µg/mL

Buffer: 50 mM Tris, 8M Urea, pH 8.0.

Storage: -80 °C

Storage Comment: Store at -80°C. Thaw on ice, aliquot to individual single-use tubes, and then re-freeze immediately. Only 2-3 freeze thaw cycles are recommended.



Western Blotting

**Image 1.** Validation with Western Blot