

Datasheet for ABIN2730439

anti-RALBP1 antibody

3 Images



[Go to Product page](#)

Overview

Quantity:	0.1 mL
Target:	RALBP1
Reactivity:	Human
Host:	Mouse
Clonality:	Monoclonal
Conjugate:	This RALBP1 antibody is un-conjugated
Application:	Western Blotting (WB), Immunohistochemistry (IHC), Immunoprecipitation (IP), Immunofluorescence (IF)

Product Details

Immunogen:	Full length human recombinant protein of human RALBP1 (NP_006779) produced in HEK293T cell.
Clone:	1E2
Isotype:	IgG1
Purification:	Purified from mouse ascites fluids by affinity chromatography

Target Details

Target:	RALBP1
Alternative Name:	RALBP1 (RALBP1 Products)
Molecular Weight:	76.0 kDa

Target Details

Gene ID: 10928

NCBI Accession: [NM_006788](#)

HGNC: 10928

Application Details

Application Notes: WB 1:2000, IHC 1:50, IF 1:100, IP: 4 µg/mL

Comment: The concentration of the product may vary between different lots.

Restrictions: For Research Use only

Handling

Format: Liquid

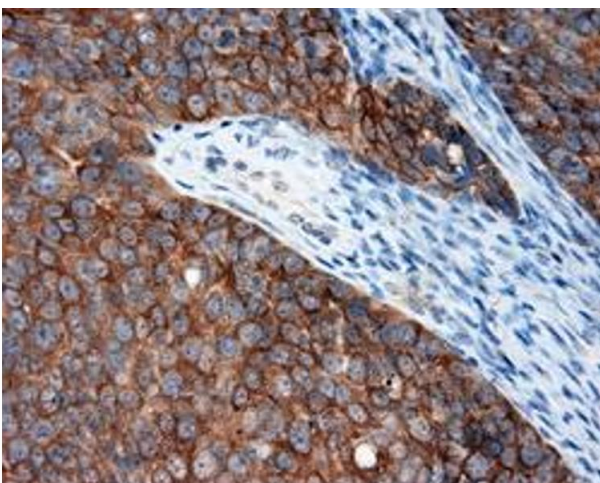
Concentration: 0.5-1.0 mg/mL

Buffer: PBS (pH 7.3) containing 1 % BSA, 50 % glycerol and 0.02 % sodium azide.

Preservative: Sodium azide

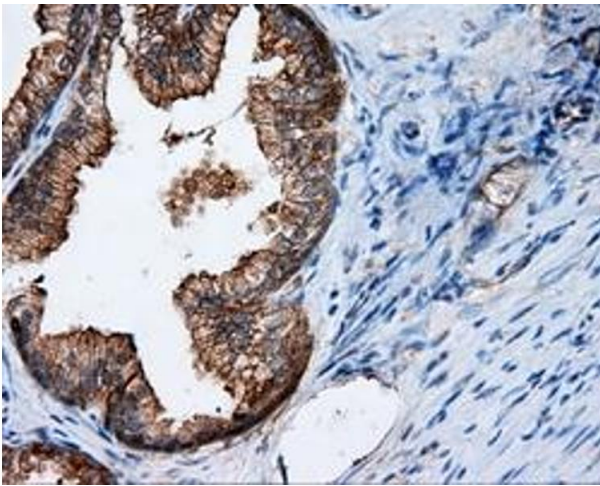
Precaution of Use: This product contains sodium azide: a POISONOUS AND HAZARDOUS SUBSTANCE which should be handled by trained staff only.

Images



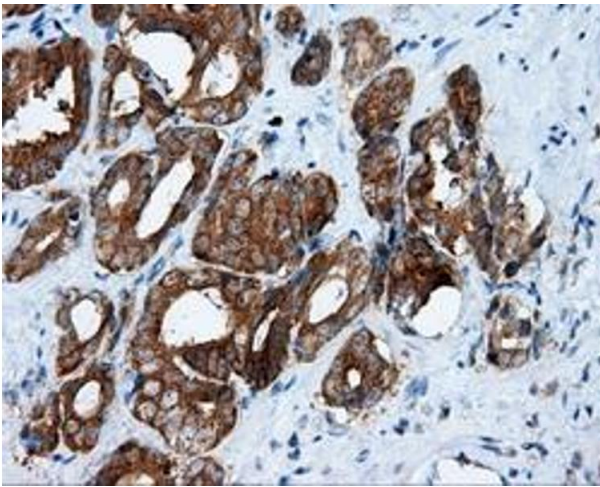
Immunohistochemistry

Image 1. Immunohistochemical staining of paraffin-embedded Adenocarcinoma of colon tissue using anti-RALBP1 mouse monoclonal antibody. (ABIN2453577, Dilution 1:50)



Immunohistochemistry

Image 2. Immunohistochemical staining of paraffin-embedded Kidney tissue using anti-RALBP1 mouse monoclonal antibody. (ABIN2453577, Dilution 1:50)



Immunohistochemistry

Image 3. Immunohistochemical staining of paraffin-embedded Adenocarcinoma of ovary tissue using anti-RALBP1 mouse monoclonal antibody. (ABIN2453577, Dilution 1:50)