

Datasheet for ABIN2730526

**anti-RASD2 antibody****3** Images[Go to Product page](#)

## Overview

Quantity:	0.1 mL
Target:	RASD2
Reactivity:	Human, Dog
Host:	Mouse
Clonality:	Monoclonal
Conjugate:	This RASD2 antibody is un-conjugated
Application:	Western Blotting (WB), Immunohistochemistry (IHC), Flow Cytometry (FACS)

## Product Details

Immunogen:	Full length human recombinant protein of human RASD2 (NP_055125) produced in HEK293T cell.
Clone:	1G1
Isotype:	IgG2a
Purification:	Purified from mouse ascites fluids by affinity chromatography

## Target Details

Target:	RASD2
Alternative Name:	RASD2 ( <a href="#">RASD2 Products</a> )
Molecular Weight:	30.2 kDa
Gene ID:	23551

## Target Details

NCBI Accession: [NM\\_014310](#)

HGNC: 23551

## Application Details

Application Notes: WB 1:500~2000, FLOW 1:100, IHC: 1:150

Comment: The concentration of the product may vary between different lots.

Restrictions: For Research Use only

## Handling

Format: Liquid

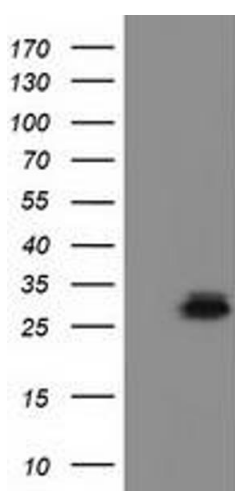
Concentration: 0.5-1.0 mg/mL

Buffer: PBS (PH 7.3) containing 1 % BSA, 50 % glycerol and 0.02 % sodium azide.

Preservative: Sodium azide

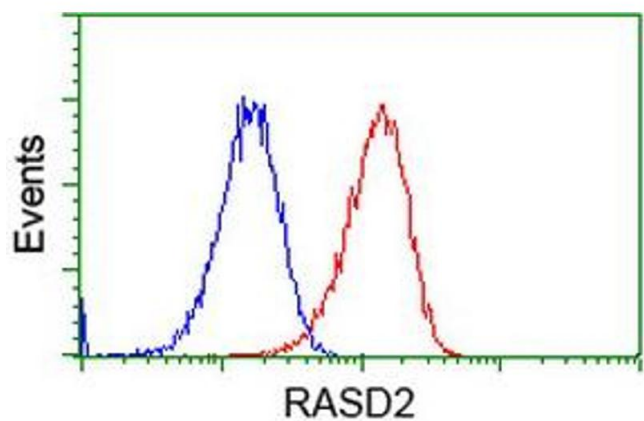
Precaution of Use: This product contains sodium azide: a POISONOUS AND HAZARDOUS SUBSTANCE which should be handled by trained staff only.

## Images



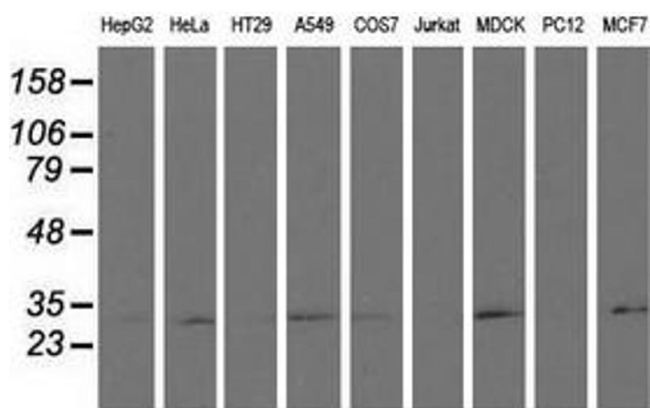
### Western Blotting

**Image 1.** HEK293T cells were transfected with the pCMV6-ENTRY control (Left lane) or pCMV6-ENTRY RASD2 (Right lane) cDNA for 48 hrs and lysed. Equivalent amounts of cell lysates (5 µg per lane) were separated by SDS-PAGE and immunoblotted with anti-RASD2.



### Flow Cytometry

**Image 2.** Flow cytometric Analysis of HeLa cells, using anti-RASD2 antibody (ABIN2453588), (Red), compared to a nonspecific negative control antibody (TA50011), (Blue).



### Western Blotting

**Image 3.** Western blot analysis of extracts (35 µg) from 9 different cell lines by using anti-RASD2 monoclonal antibody.