

Datasheet for ABIN2730675

**anti-REEP2 antibody****2** Images[Go to Product page](#)

## Overview

Quantity:	0.1 mL
Target:	REEP2
Reactivity:	Human, Rat, Mouse, Dog
Host:	Mouse
Clonality:	Monoclonal
Application:	Western Blotting (WB), Flow Cytometry (FACS)

## Product Details

Immunogen:	Full length human recombinant protein of human REEP2(NP_0557690) produced in HEK293T cell.
Clone:	2B7
Isotype:	IgG2a
Characteristics:	Homo sapiens receptor accessory protein 2 (REEP2)
Purification:	Purified from mouse ascites fluids by affinity chromatography

## Target Details

Target:	REEP2
Alternative Name:	REEP2 ( <a href="#">REEP2 Products</a> )
Molecular Weight:	28.1 kDa
Gene ID:	51308

## Target Details

NCBI Accession: [NM\\_016606](#)

HGNC: 51308

## Application Details

Application Notes: WB 1:500~2000, FLOW 1:100,

Comment: The concentration of the product may vary between diferrent lots.

Restrictions: For Research Use only

## Handling

Format: Liquid

Concentration: 0.5-1.0 mg/mL

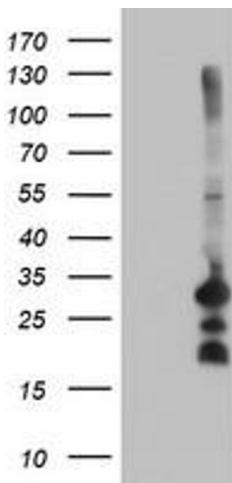
Buffer: PBS (PH 7.3) containing 1 % BSA, 50 % glycerol and 0.02 % sodium azide.

Preservative: Sodium azide

Precaution of Use: This product contains sodium azide: a POISONOUS AND HAZARDOUS SUBSTANCE which should be handled by trained staff only.

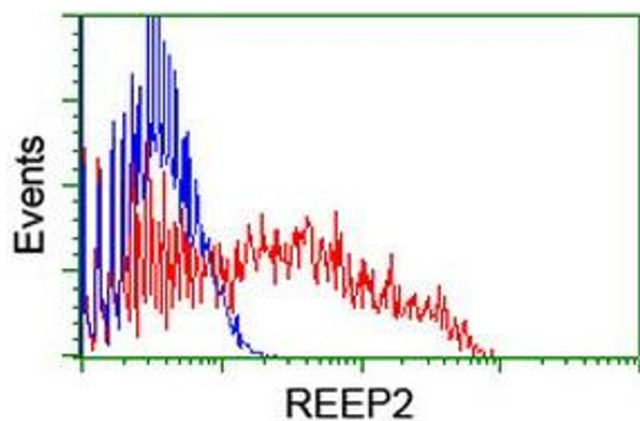
Storage: -20 °C

## Images



### Western Blotting

**Image 1.** HEK293T cells were transfected with the pCMV6-ENTRY control (Left lane) or pCMV6-ENTRY REEP2 (Right lane) cDNA for 48 hrs and lysed. Equivalent amounts of cell lysates (5 µg per lane) were separated by SDS-PAGE and immunoblotted with anti-REEP2.



### Flow Cytometry

**Image 2.** HEK293T cells transfected with either RC202507 overexpress plasmid (Red) or empty vector control plasmid (Blue) were immunostained by anti-REEP2 antibody (ABIN2455575), and then analyzed by flow cytometry.