

Datasheet for ABIN2730684

**REG1A Protein**[Go to Product page](#)**1** Image

## Overview

|               |   |
|---------------|---|
| Quantity:     | 10 µg                                     |
| Target:       | REG1A                                     |
| Origin:       | Human                                     |
| Source:       | HEK-293 Cells                             |
| Protein Type: | Recombinant                               |
| Application:  | Antibody Production (AbP), Standard (STD) |

## Product Details

|                  |  |
|------------------|--|
| Characteristics: | <ul style="list-style-type: none"><li>• Recombinant human REG1A protein expressed in HEK293 cells.</li><li>• Produced with end-sequenced ORF clone</li></ul> |
| Purity:          | > 95 % as determined by SDS-PAGE and Coomassie blue staining   |
| Endotoxin Level: | < 0.1 EU per µg protein as determined by LAL test  |

## Target Details

|                   |   |
|-------------------|---|
| Target:           | REG1A   |
| Alternative Name: | Reg1a ( <a href="#">REG1A Products</a> )  |
| Background:       | This gene is a type I subclass member of the Reg gene family. The Reg gene family is a multigene family grouped into four subclasses, types I, II, III and IV, based on the primary structures of the encoded proteins. This gene encodes a protein that is secreted by the exocrine pancreas. It is associated with islet cell regeneration and diabetogenesis and may be involved in pancreatic lithogenesis. Reg family members REG1B, REGL, PAP and this gene are |

## Target Details

|                   |   |
|-------------------|---|
|                   | tandemly clustered on chromosome 2p12 and may have arisen from the same ancestral gene by gene duplication. |
| Molecular Weight: | 17.3 kDa  |
| NCBI Accession:   | <a href="#">NP_002900</a>   |

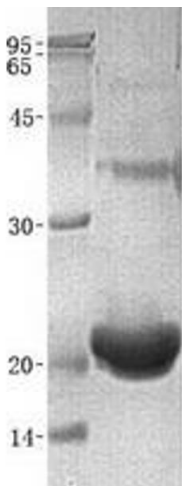
## Application Details

|                    |  |
|--------------------|--|
| Application Notes: | Recombinant human proteins can be used for:<br>Native antigens for optimized antibody production<br>Positive controls in ELISA and other antibody assays |
| Restrictions:      | For Research Use only  |

## Handling

|                  |  |
|------------------|--|
| Buffer:          | Lyophilized from a 0.2 µM filtered solution of 20 mM Phosphate buffer, 150 mM NaCl, pH 7.2.<br>Stable for at least 6 months from date of receipt under proper storage and handling conditions. |
| Storage:         | -80 °C   |
| Storage Comment: | Store at -80°C. Thaw on ice, aliquot to individual single-use tubes, and then re-freeze immediately. Only 2-3 freeze thaw cycles are recommended.  |

## Images



### Western Blotting

**Image 1.** Validation with Western Blot