

Datasheet for ABIN2730694

**RGS3 Protein (Transcript Variant 2) (Myc-DYKDDDDK Tag)**[Go to Product page](#)**1** Image

## Overview

Quantity:	20 µg
Target:	RGS3
Protein Characteristics:	Transcript Variant 2
Origin:	Human
Source:	HEK-293 Cells
Protein Type:	Recombinant
Purification tag / Conjugate:	This RGS3 protein is labelled with Myc-DYKDDDDK Tag.
Application:	Antibody Production (AbP), Standard (STD)

## Product Details

Characteristics:	<ul style="list-style-type: none"><li>• Recombinant human Regulator of G-protein signaling 3 (RGS3), transcript variant 2 (transcript variant 2) protein expressed in HEK293 cells.</li><li>• Produced with end-sequenced ORF clone</li></ul>
Purity:	> 80 % as determined by SDS-PAGE and Coomassie blue staining

## Target Details

Target:	RGS3
Abstract:	<a href="#">RGS3 Products</a>
Background:	This gene encodes a member of the regulator of G-protein signaling (RGS) family. This protein is a GTPase-activating protein that inhibits G-protein-mediated signal transduction. Alternative splicing and the use of alternative promoters results in multiple transcript variants encoding

## Target Details

different isoforms. Long isoforms are largely cytosolic and plasma membrane-associated with a function in Wnt signaling and in the epithelial mesenchymal transition, while shorter N-terminally-truncated isoforms can be nuclear.

Molecular Weight: 56.4 kDa

NCBI Accession: [NP\\_066929](#)

Pathways: [Myometrial Relaxation and Contraction](#), [Regulation of G-Protein Coupled Receptor Protein Signaling](#)

## Application Details

Application Notes: Recombinant human proteins can be used for:  
Native antigens for optimized antibody production  
Positive controls in ELISA and other antibody assays

Comment: The tag is located at the C-terminal.

Restrictions: For Research Use only

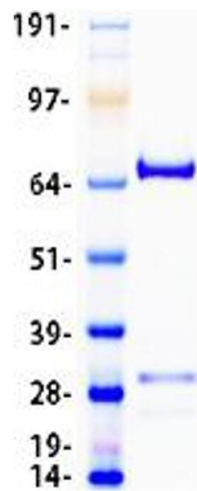
## Handling

Concentration: 50 µg/mL

Buffer: 25 mM Tris.HCl, pH 7.3, 100 mM glycine, 10 % glycerol.

Storage: -80 °C

Storage Comment: Store at -80°C. Thaw on ice, aliquot to individual single-use tubes, and then re-freeze immediately. Only 2-3 freeze thaw cycles are recommended.



Western Blotting

**Image 1.** Validation with Western Blot