

Datasheet for ABIN2730783

anti-RFPL1 antibody

3 Images

[Go to Product page](#)

Overview

Quantity:	0.1 mL
Target:	RFPL1
Reactivity:	Human
Host:	Mouse
Clonality:	Monoclonal
Application:	Western Blotting (WB), Flow Cytometry (FACS), Immunofluorescence (IF)

Product Details

Immunogen:	Full length human recombinant protein of human RFPL1 (NP_066306) produced in HEK293T cell.
Clone:	1D3
Isotype:	IgG2a
Purification:	Purified from mouse ascites fluids by affinity chromatography

Target Details

Target:	RFPL1
Alternative Name:	RFPL1 (RFPL1 Products)
Molecular Weight:	35.3 kDa
Gene ID:	5988
NCBI Accession:	NM_021026

Target Details

HGNC: 5988

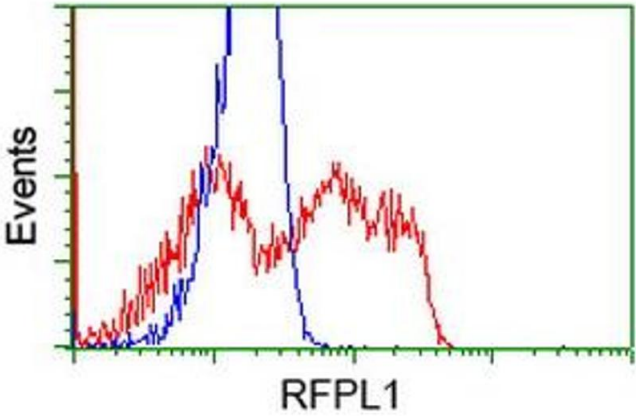
Application Details

Application Notes:	WB 1:2000, IF 1:100, FLOW 1:100
Comment:	The concentration of the product may vary between different lots.
Restrictions:	For Research Use only

Handling

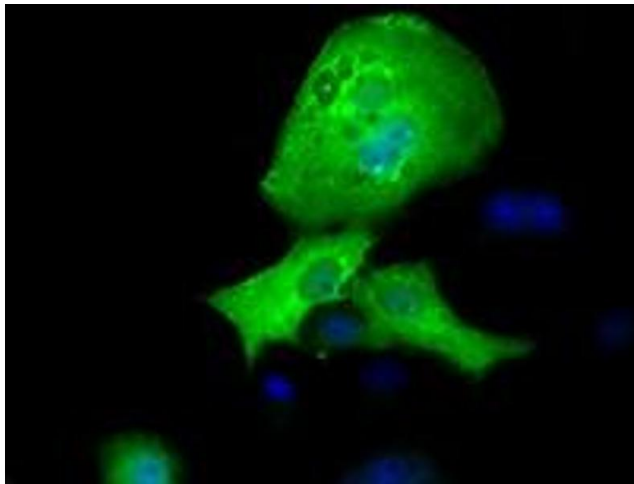
Format:	Liquid
Concentration:	0.5-1.0 mg/mL
Buffer:	PBS (PH 7.3) containing 1 % BSA, 50 % glycerol and 0.02 % sodium azide.
Preservative:	Sodium azide
Precaution of Use:	This product contains sodium azide: a POISONOUS AND HAZARDOUS SUBSTANCE which should be handled by trained staff only.

Images



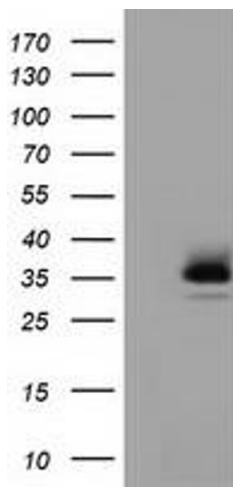
Flow Cytometry

Image 1. HEK293T cells transfected with either RC211141 overexpress plasmid (Red) or empty vector control plasmid (Blue) were immunostained by anti-RFPL1 antibody (ABIN2453595), and then analyzed by flow cytometry.



Immunofluorescence

Image 2. Anti-RFPL1 mouse monoclonal antibody (ABIN2453595) immunofluorescent staining of COS7 cells transiently transfected by pCMV6-ENTRY RFPL1 (RC211141).



Western Blotting

Image 3. HEK293T cells were transfected with the pCMV6-ENTRY control (Left lane) or pCMV6-ENTRY RFPL1 (Right lane) cDNA for 48 hrs and lysed. Equivalent amounts of cell lysates (5 µg per lane) were separated by SDS-PAGE and immunoblotted with anti-RFPL1.