

Datasheet for ABIN2730977

RMI1 Protein (Myc-DYKDDDDK Tag)[Go to Product page](#)**1** Image

Overview

Quantity:	20 µg
Target:	RMI1
Origin:	Human
Source:	HEK-293 Cells
Protein Type:	Recombinant
Purification tag / Conjugate:	This RMI1 protein is labelled with Myc-DYKDDDDK Tag.
Application:	Antibody Production (AbP), Standard (STD)

Product Details

Characteristics:	<ul style="list-style-type: none">• Recombinant human RMI1 / BLAP75 protein expressed in HEK293 cells.• Produced with end-sequenced ORF clone
------------------	--

Purity:	> 80 % as determined by SDS-PAGE and Coomassie blue staining
---------	--

Target Details

Target:	RMI1
Alternative Name:	Rmi1,blap75 (RMI1 Products)
Background:	RMI1 is a component of protein complexes that limit DNA crossover formation via the dissolution of double Holliday junctions (Raynard et al., 2006 [PubMed 16595695]). [supplied by OMIM, Mar 2008].
Molecular Weight:	70 kDa

Target Details

NCBI Accession: [NP_079221](#)

Pathways: [DNA Damage Repair](#)

Application Details

Application Notes: Recombinant human proteins can be used for:
Native antigens for optimized antibody production
Positive controls in ELISA and other antibody assays

Comment: The tag is located at the C-terminal.

Restrictions: For Research Use only

Handling

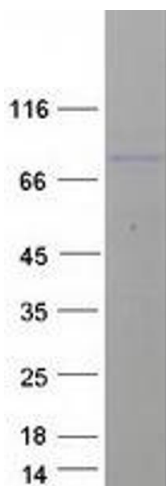
Concentration: 50 µg/mL

Buffer: 25 mM Tris.HCl, pH 7.3, 100 mM glycine, 10 % glycerol.

Storage: -80 °C

Storage Comment: Store at -80°C. Thaw on ice, aliquot to individual single-use tubes, and then re-freeze immediately. Only 2-3 freeze thaw cycles are recommended.

Images



Western Blotting

Image 1. Validation with Western Blot