



[Go to Product page](#)

Datasheet for ABIN2730985  
**RBMY1A1 Protein (His tag)**

1 Image

Overview

Quantity:	50 µg
Target:	RBMY1A1
Origin:	Human
Source:	Escherichia coli (E. coli)
Protein Type:	Recombinant
Purification tag / Conjugate:	This RBMY1A1 protein is labelled with His tag.
Application:	Antibody Production (AbP), Standard (STD)

Product Details

Characteristics:	<ul style="list-style-type: none"> <li>Recombinant human RNA binding motif protein, Y-linked, family 1, member A1 (RBMY1A1), transcript variant 2, full length, with N-terminal HIS tag, expressed in E. coli, 50 µg (full length, N-term HIS tag, transcript variant 2) protein expressed in E.coli.</li> <li>Produced with end-sequenced ORF clone</li> </ul>
Purity:	> 80 % as determined by SDS-PAGE and Coomassie blue staining

Target Details

Target:	RBMY1A1
Alternative Name:	Rna Binding Motif Protein, Y-Linked, Family 1, Member a1 (Rbmy1a1) ( <a href="#">RBMY1A1 Products</a> )
Background:	This gene encodes a protein containing an RNA-binding motif in the N-terminus and four SRGY (serine, arginine, glycine, tyrosine) boxes in the C-terminus. This protein is thought to function as a splicing regulator during spermatogenesis. Multiple closely related paralogs of this gene

## Target Details

are found in a gene cluster in the AZFb azoospermia factor region of chromosome Y. Most of these related copies are thought to be pseudogenes, though several likely encode functional proteins.

Molecular Weight: 40.5 kDa

NCBI Accession: [NP\\_001007527](#)

## Application Details

Application Notes: Recombinant human proteins can be used for:  
Native antigens for optimized antibody production  
Positive controls in ELISA and other antibody assays

Comment: The tag is located at the N-terminal.

Restrictions: For Research Use only

## Handling

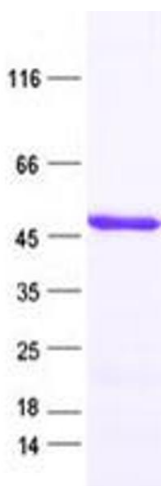
Concentration: 50 µg/mL

Buffer: 50 mM Tris, 8M Urea, pH 8.0

Storage: -80 °C

Storage Comment: Store at -80°C. Thaw on ice, aliquot to individual single-use tubes, and then re-freeze immediately. Only 2-3 freeze thaw cycles are recommended.

## Images



### Western Blotting

**Image 1.** Validation with Western Blot