

Datasheet for ABIN2731016

RLIM Protein (His tag)**1** Image[Go to Product page](#)

Overview

Quantity:	50 µg
Target:	RLIM
Origin:	Human
Source:	Escherichia coli (E. coli)
Protein Type:	Recombinant
Purification tag / Conjugate:	This RLIM protein is labelled with His tag.
Application:	Antibody Production (AbP), Standard (STD)

Product Details

Characteristics:	<ul style="list-style-type: none">• Recombinant human RNF12 / RLIM (full length, N-term HIS tag, transcript variant 2) protein expressed in E.coli.• Produced with end-sequenced ORF clone
Purity:	> 80 % as determined by SDS-PAGE and Coomassie blue staining

Target Details

Target:	RLIM
Alternative Name:	Rnf12,rlim (RLIM Products)
Background:	The protein encoded by this gene is a RING-H2 zinc finger protein. It has been shown to be an E3 ubiquitin protein ligase that targets LIM domain binding 1 (LDB1/CLIM), and causes proteasome-dependent degradation of LDB1. This protein and LDB1 are co-repressors of LHX1/LIM-1, a homeodomain transcription factor. Multiple alternatively spliced variants,

Target Details

	encoding the same protein, have been identified.
Molecular Weight:	68.4 kDa
NCBI Accession:	NP_899196

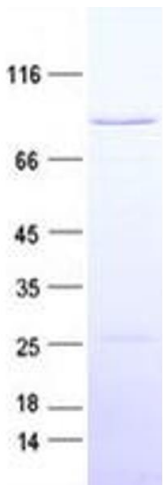
Application Details

Application Notes:	Recombinant human proteins can be used for: Native antigens for optimized antibody production Positive controls in ELISA and other antibody assays
Comment:	The tag is located at the N-terminal.
Restrictions:	For Research Use only

Handling

Concentration:	50 µg/mL
Buffer:	25 mM Tris, pH 8.0, 150 mM NaCl, 10 % glycerol, 1 % Sarkosyl.
Storage:	-80 °C
Storage Comment:	Store at -80°C. Thaw on ice, aliquot to individual single-use tubes, and then re-freeze immediately. Only 2-3 freeze thaw cycles are recommended.

Images



Western Blotting

Image 1. Validation with Western Blot