

Datasheet for ABIN2731123
RPL10L Protein (His tag)[Go to Product page](#)

1 Image

Overview

Quantity:	50 µg
Target:	RPL10L
Origin:	Human
Source:	Escherichia coli (E. coli)
Protein Type:	Recombinant
Purification tag / Conjugate:	This RPL10L protein is labelled with His tag.
Application:	Antibody Production (AbP), Standard (STD)

Product Details

Characteristics:	<ul style="list-style-type: none">• Recombinant human RPL10L (full length, N-term HIS tag) protein expressed in E.coli.• Produced with end-sequenced ORF clone
Purity:	> 80 % as determined by SDS-PAGE and Coomassie blue staining

Target Details

Target:	RPL10L
Alternative Name:	Rpl10l (RPL10L Products)
Background:	This gene encodes a protein sharing sequence similarity with ribosomal protein L10. It is not currently known whether the encoded protein is a functional ribosomal protein or whether it has evolved a function that is independent of the ribosome. This gene is intronless.
Molecular Weight:	24.3 kDa

Target Details

NCBI Accession: [NP_542784](#)

Application Details

Application Notes: Recombinant human proteins can be used for:
Native antigens for optimized antibody production
Positive controls in ELISA and other antibody assays

Comment: The tag is located at the N-terminal.

Restrictions: For Research Use only

Handling

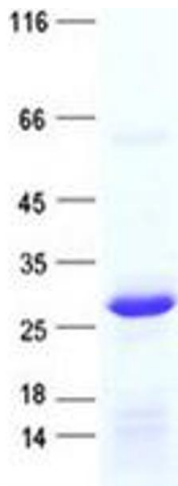
Concentration: 50 µg/mL

Buffer: 50 mM Tris, pH 8.0, 500 mM NaCl, 10 % glycerol.

Storage: -80 °C

Storage Comment: Store at -80°C. Thaw on ice, aliquot to individual single-use tubes, and then re-freeze immediately. Only 2-3 freeze thaw cycles are recommended.

Images



Western Blotting

Image 1. Validation with Western Blot