

Datasheet for ABIN2731182

RPS6KB1 Protein (Myc-DYKDDDDK Tag)[Go to Product page](#)**1** Image

Overview

Quantity:	20 µg
Target:	RPS6KB1
Origin:	Human
Source:	HEK-293 Cells
Protein Type:	Recombinant
Purification tag / Conjugate:	This RPS6KB1 protein is labelled with Myc-DYKDDDDK Tag.
Application:	Antibody Production (AbP), Standard (STD)

Product Details

Characteristics:	<ul style="list-style-type: none">• Recombinant human RPS6KB1 / STK14A protein expressed in HEK293 cells.• Produced with end-sequenced ORF clone
Purity:	> 80 % as determined by SDS-PAGE and Coomassie blue staining

Target Details

Target:	RPS6KB1
Alternative Name:	Rps6kb1,stk14a (RPS6KB1 Products)
Background:	<p>This gene encodes a member of the ribosomal S6 kinase family of serine/threonine kinases. The encoded protein responds to mTOR (mammalian target of rapamycin) signaling to promote protein synthesis, cell growth, and cell proliferation. Activity of this gene has been associated with human cancer. Alternatively spliced transcript variants have been observed.</p> <p>The use of alternative translation start sites results in isoforms with longer or shorter N-termini</p>

Target Details

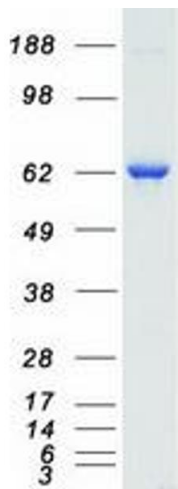
	which may differ in their subcellular localizations. There are two pseudogenes for this gene on chromosome 17.
Molecular Weight:	59 kDa
NCBI Accession:	NP_003152
Pathways:	PI3K-Akt Signaling , RTK Signaling , AMPK Signaling , Regulation of Cell Size , Skeletal Muscle Fiber Development , Feeding Behaviour , G-protein mediated Events , Smooth Muscle Cell Migration , Interaction of EGFR with phospholipase C-gamma , Warburg Effect

Application Details

Application Notes:	Recombinant human proteins can be used for: Native antigens for optimized antibody production Positive controls in ELISA and other antibody assays
Comment:	The tag is located at the C-terminal.
Restrictions:	For Research Use only

Handling

Concentration:	50 µg/mL
Buffer:	25 mM Tris.HCl, pH 7.3, 100 mM glycine, 10 % glycerol.
Storage:	-80 °C
Storage Comment:	Store at -80°C. Thaw on ice, aliquot to individual single-use tubes, and then re-freeze immediately. Only 2-3 freeze thaw cycles are recommended.



Western Blotting

Image 1. Validation with Western Blot