

Datasheet for ABIN2731186

**RPS7 Protein (Myc-DYKDDDDK Tag)**[Go to Product page](#)**1** Image

## Overview

|                               |  |
|-------------------------------|--|
| Quantity:                     | 20 µg  |
| Target:                       | RPS7   |
| Origin:                       | Human  |
| Source:                       | HEK-293 Cells  |
| Protein Type:                 | Recombinant  |
| Purification tag / Conjugate: | This RPS7 protein is labelled with Myc-DYKDDDDK Tag. |
| Application:                  | Antibody Production (AbP), Standard (STD)            |

## Product Details

|                  |   |
|------------------|---|
| Characteristics: | <ul style="list-style-type: none"><li>• Recombinant human RPS7 protein expressed in HEK293 cells.</li><li>• Produced with end-sequenced ORF clone</li></ul> |
| Purity:          | > 80 % as determined by SDS-PAGE and Coomassie blue staining  |

## Target Details

|                   |  |
|-------------------|--|
| Target:           | RPS7   |
| Alternative Name: | Rps7 ( <a href="#">RPS7 Products</a> )   |
| Background:       | Ribosomes, the organelles that catalyze protein synthesis, consist of a small 40S subunit and a large 60S subunit. Together these subunits are composed of 4 RNA species and approximately 80 structurally distinct proteins. This gene encodes a ribosomal protein that is a component of the 40S subunit. The protein belongs to the S7E family of ribosomal proteins. It is located in the cytoplasm. As is typical for genes encoding ribosomal proteins, there are multiple processed |

## Target Details

|                   |  |
|-------------------|--|
|                   | pseudogenes of this gene dispersed through the genome. |
| Molecular Weight: | 21.9 kDa   |
| NCBI Accession:   | <a href="#">NP_001002</a>                              |
| Pathways:         | <a href="#">Tube Formation</a>                         |

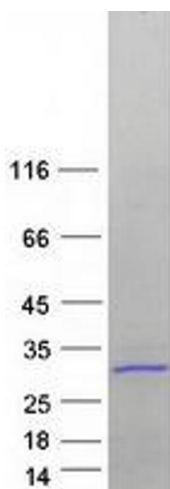
## Application Details

|                    |  |
|--------------------|--|
| Application Notes: | Recombinant human proteins can be used for:<br>Native antigens for optimized antibody production<br>Positive controls in ELISA and other antibody assays |
| Comment:           | The tag is located at the C-terminal.  |
| Restrictions:      | For Research Use only  |

## Handling

|                  |   |
|------------------|---|
| Concentration:   | 50 µg/mL  |
| Buffer:          | 25 mM Tris.HCl, pH 7.3, 100 mM glycine, 10 % glycerol.  |
| Storage:         | -80 °C  |
| Storage Comment: | Store at -80°C. Thaw on ice, aliquot to individual single-use tubes, and then re-freeze immediately. Only 2-3 freeze thaw cycles are recommended. |

## Images



### Western Blotting

**Image 1.** Validation with Western Blot