

Datasheet for ABIN2731220

RSPH6A Protein (Myc-DYKDDDDK Tag)[Go to Product page](#)**1** Image

Overview

Quantity:	20 µg
Target:	RSPH6A
Origin:	Human
Source:	HEK-293 Cells
Protein Type:	Recombinant
Purification tag / Conjugate:	This RSPH6A protein is labelled with Myc-DYKDDDDK Tag.
Application:	Antibody Production (AbP), Standard (STD)

Product Details

Characteristics:	<ul style="list-style-type: none">• Recombinant human RSPH6A / RSHL1 protein expressed in HEK293 cells.• Produced with end-sequenced ORF clone
Purity:	> 80 % as determined by SDS-PAGE and Coomassie blue staining

Target Details

Target:	RSPH6A
Alternative Name:	Rsph6a,rshl1 (RSPH6A Products)
Background:	The protein encoded by this gene is similar to a sea urchin radial spoke head protein. Radial spoke protein complexes form part of the axoneme of eukaryotic flagella and are located between the axoneme's outer ring of doublet microtubules and central pair of microtubules. In Chlamydomonas, radial spoke proteins are thought to regulate the activity of dynein and the symmetry of flagellar bending patterns. This gene maps to a region of

Target Details

	chromosome 19 that is linked to primary ciliary dyskinesia-2 (CILD2).
Molecular Weight:	80.7 kDa
NCBI Accession:	NP_110412

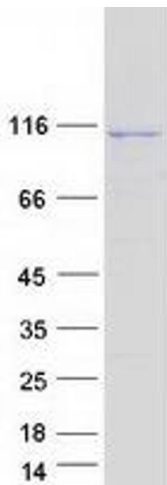
Application Details

Application Notes:	Recombinant human proteins can be used for: Native antigens for optimized antibody production Positive controls in ELISA and other antibody assays
Comment:	The tag is located at the C-terminal.
Restrictions:	For Research Use only

Handling

Concentration:	50 µg/mL
Buffer:	25 mM Tris.HCl, pH 7.3, 100 mM glycine, 10 % glycerol.
Storage:	-80 °C
Storage Comment:	Store at -80°C. Thaw on ice, aliquot to individual single-use tubes, and then re-freeze immediately. Only 2-3 freeze thaw cycles are recommended.

Images



Western Blotting

Image 1. Validation with Western Blot