

Datasheet for ABIN2731226

**RSP01 Protein**[Go to Product page](#)**1** Image

## Overview

Quantity:	20 µg
Target:	RSP01
Origin:	Human
Source:	CHO Cells
Protein Type:	Recombinant
Biological Activity:	Active
Application:	Antibody Production (AbP), Functional Studies (Func), Protein Interaction (PI), Standard (STD)

## Product Details

Specificity:	Optimal preservation of protein structure, post-translational modifications and functions.
Characteristics:	<ul style="list-style-type: none"><li>• Recombinant human RSP01 protein expressed in CHO cells.</li><li>• Produced with end-sequenced ORF clone</li><li>• Tested for bioactivity.</li></ul>
Purity:	> 95 % as determined by SDS-PAGE and Coomassie blue staining
Endotoxin Level:	Endotoxin level is <0.1 ng/µg of protein (<1EU/µg).
Biological Activity Comment:	R-spondin-1 enhances BMP-2 mediated differentiation of MC3T3-E1 cells. The expected ED50 is 1.0-3.0 µg/ml.

## Target Details

Target:	RSP01
Alternative Name:	Rspo1 ( <a href="#">RSP01 Products</a> )

## Target Details

---

**Background:** This gene encodes a secreted activator protein with two cysteine-rich, furin-like domains and one thrombospondin type 1 domain. The encoded protein is a ligand for leucine-rich repeat-containing G-protein coupled receptors (LGR proteins) and positively regulates the Wnt signaling pathway. In mice, the protein induces the rapid onset of crypt cell proliferation and increases intestinal epithelial healing, providing a protective effect against chemotherapy-induced adverse effects. Alternative splicing results in multiple transcript variants.

**Molecular Weight:** 26.7 kDa

**NCBI Accession:** [NP\\_001033722](#)

## Application Details

---

**Application Notes:** Recombinant human proteins can be used for:

- Native antigens for optimized antibody production
- Positive controls in ELISA and other antibody assays
- Protein-protein interaction
- In vitro biochemical assays and cell-based functional assays

**Restrictions:** For Research Use only

## Handling

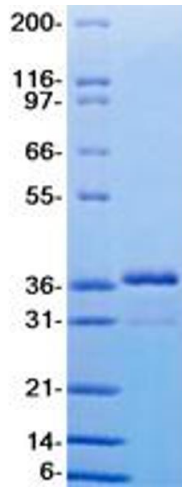
---

**Buffer:** Lyophilized from a 0.2  $\mu$ M filtered solution of 20 mM phosphate buffer, 100 mM NaCl, pH 7.2

**Handling Advice:** Resuspend the protein in the desired concentration in proper buffer

**Storage:** -80 °C

**Storage Comment:** Store at -80°C. Thaw on ice, aliquot to individual single-use tubes, and then re-freeze immediately. Only 2-3 freeze thaw cycles are recommended.



### Western Blotting

**Image 1.** Validation with Western Blot