

Datasheet for ABIN2731245

## RUFY3 Protein (Transcript Variant 3) (Myc-DYKDDDDK Tag)



[Go to Product page](#)

### 1 Image

#### Overview

Quantity:	20 µg
Target:	RUFY3
Protein Characteristics:	Transcript Variant 3
Origin:	Human
Source:	HEK-293 Cells
Protein Type:	Recombinant
Purification tag / Conjugate:	This RUFY3 protein is labelled with Myc-DYKDDDDK Tag.
Application:	Antibody Production (AbP), Standard (STD)

#### Product Details

Characteristics:	<ul style="list-style-type: none"><li>• Recombinant human RUFY3 / RIPx (transcript variant 3) protein expressed in HEK293 cells.</li><li>• Produced with end-sequenced ORF clone</li></ul>
Purity:	> 80 % as determined by SDS-PAGE and Coomassie blue staining

#### Target Details

Target:	RUFY3
Alternative Name:	Rufy3,ripix ( <a href="#">RUFY3 Products</a> )
Background:	This gene encodes a RPIP8, UNC-14, and NESCA domain-containing protein that is required for maintenance of neuronal polarity. In addition, it has been implicated in mediation of gastric cancer cell migration and invasion via interaction with P21-activated kinase-1, which promotes its expression. The encoded protein localizes to F-actin-enriched invadopodia to induce

## Target Details

formation of protrusions, thereby facilitating cell migration. Alternative splicing results in multiple transcript variants.

Molecular Weight: 55.7 kDa

NCBI Accession: [NP\\_001124181](#)

## Application Details

Application Notes: Recombinant human proteins can be used for:  
Native antigens for optimized antibody production  
Positive controls in ELISA and other antibody assays

Comment: The tag is located at the C-terminal.

Restrictions: For Research Use only

## Handling

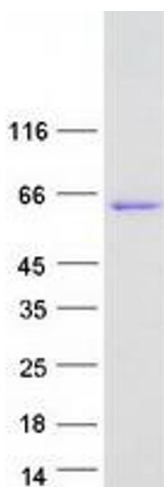
Concentration: 50 µg/mL

Buffer: 25 mM Tris.HCl, pH 7.3, 100 mM glycine, 10 % glycerol.

Storage: -80 °C

Storage Comment: Store at -80°C. Thaw on ice, aliquot to individual single-use tubes, and then re-freeze immediately. Only 2-3 freeze thaw cycles are recommended.

## Images



### Western Blotting

**Image 1.** Validation with Western Blot