

Datasheet for ABIN2731349

SACM1L Protein (Myc-DYKDDDDK Tag)[Go to Product page](#)**1** Image

Overview

Quantity:	20 µg
Target:	SACM1L
Origin:	Human
Source:	HEK-293 Cells
Protein Type:	Recombinant
Purification tag / Conjugate:	This SACM1L protein is labelled with Myc-DYKDDDDK Tag.
Application:	Antibody Production (AbP), Standard (STD)

Product Details

Characteristics:	<ul style="list-style-type: none">• Recombinant human SACM1L protein expressed in HEK293 cells.• Produced with end-sequenced ORF clone
Purity:	> 80 % as determined by SDS-PAGE and Coomassie blue staining

Target Details

Target:	SACM1L
Alternative Name:	Sacm1l (SACM1L Products)
Background:	<p>This gene encodes an integral membrane protein that is localized to the endoplasmic reticulum and golgi, and functions as a phosphoinositide lipid phosphatase. Studies in mammals suggest that this gene is involved in the organization of golgi membranes and the mitotic spindles.</p> <p>Alternatively spliced transcript variants have been found for this gene.</p>
Molecular Weight:	66.8 kDa

Target Details

NCBI Accession:	NP_054735
Pathways:	Inositol Metabolic Process

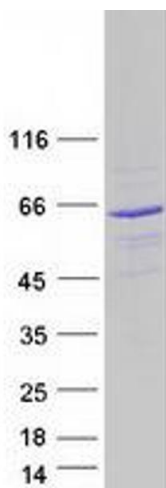
Application Details

Application Notes:	Recombinant human proteins can be used for: Native antigens for optimized antibody production Positive controls in ELISA and other antibody assays
Comment:	The tag is located at the C-terminal.
Restrictions:	For Research Use only

Handling

Concentration:	50 µg/mL
Buffer:	25 mM Tris.HCl, pH 7.3, 100 mM glycine, 10 % glycerol.
Storage:	-80 °C
Storage Comment:	Store at -80°C. Thaw on ice, aliquot to individual single-use tubes, and then re-freeze immediately. Only 2-3 freeze thaw cycles are recommended.

Images



Western Blotting

Image 1. Validation with Western Blot