

Datasheet for ABIN2731411

anti-SAT2 antibody**3** Images[Go to Product page](#)

Overview

Quantity:	0.1 mL
Target:	SAT2
Reactivity:	Human, Monkey
Host:	Mouse
Clonality:	Monoclonal
Application:	Western Blotting (WB), Immunofluorescence (IF), Flow Cytometry (FACS)

Product Details

Immunogen:	Full length human recombinant protein of human SAT2(NP_597998) produced in HEK293T cell.
Clone:	2A3
Isotype:	IgG1
Characteristics:	Homo sapiens spermidine/spermine N1-acetyltransferase family member 2 (SAT2)
Purification:	Purified from mouse ascites fluids by affinity chromatography

Target Details

Target:	SAT2
Alternative Name:	SAT2 (SAT2 Products)
Molecular Weight:	19 kDa
Gene ID:	112483
NCBI Accession:	NM_133491

Target Details

HGNC: 112483

Application Details

Application Notes: WB 1:500~2000, IF 1:100, FLOW 1:100,

Comment: The concentration of the product may vary between different lots.

Restrictions: For Research Use only

Handling

Format: Liquid

Concentration: 0.5-1.0 mg/mL

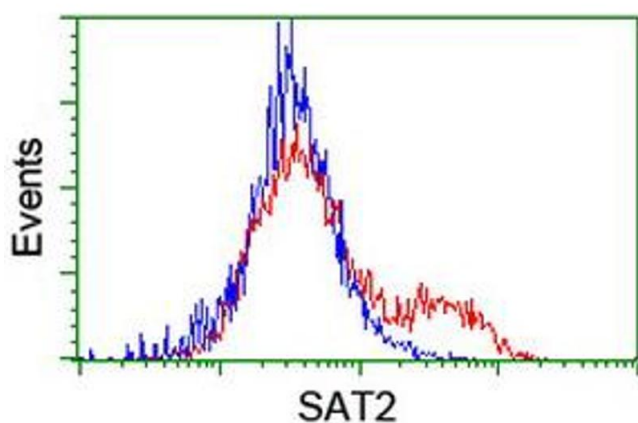
Buffer: PBS (PH 7.3) containing 1 % BSA, 50 % glycerol and 0.02 % sodium azide.

Preservative: Sodium azide

Precaution of Use: This product contains sodium azide: a POISONOUS AND HAZARDOUS SUBSTANCE which should be handled by trained staff only.

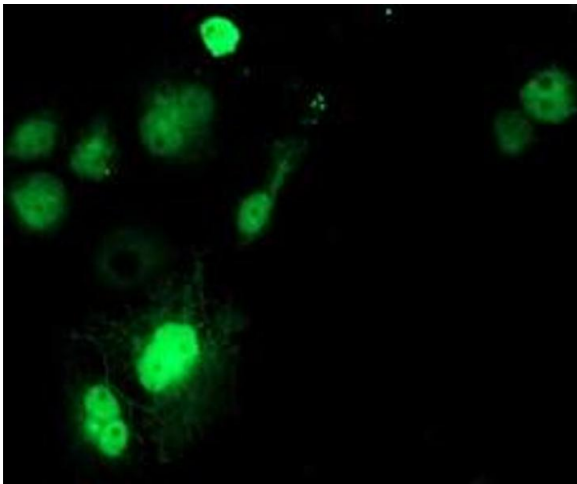
Storage: -20 °C

Images



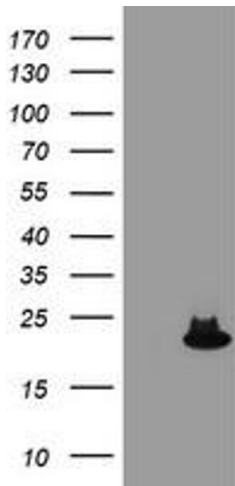
Flow Cytometry

Image 1. HEK293T cells transfected with either RC204044 overexpress plasmid (Red) or empty vector control plasmid (Blue) were immunostained by anti-SAT2 antibody (ABIN2455748), and then analyzed by flow cytometry.



Immunofluorescence

Image 2. Anti-SAT2 mouse monoclonal antibody (ABIN2455748) immunofluorescent staining of COS7 cells transiently transfected by pCMV6-ENTRY SAT2 (RC204044).



Western Blotting

Image 3. HEK293T cells were transfected with the pCMV6-ENTRY control (Left lane) or pCMV6-ENTRY SAT2 (Right lane) cDNA for 48 hrs and lysed. Equivalent amounts of cell lysates (5 µg per lane) were separated by SDS-PAGE and immunoblotted with anti-SAT2.