



[Go to Product page](#)

Datasheet for ABIN2731565

SEC14L2 Protein (Transcript Variant 1) (Myc-DYKDDDDK Tag)

1 Image

Overview

| | |
|-------------------------------|---|
| Quantity: | 20 µg |
| Target: | SEC14L2 |
| Protein Characteristics: | Transcript Variant 1 |
| Origin: | Human |
| Source: | HEK-293 Cells |
| Protein Type: | Recombinant |
| Purification tag / Conjugate: | This SEC14L2 protein is labelled with Myc-DYKDDDDK Tag. |
| Application: | Antibody Production (AbP), Standard (STD) |

Product Details

| | |
|------------------|---|
| Characteristics: | <ul style="list-style-type: none">• Recombinant human SEC14L2 (transcript variant 1) protein expressed in HEK293 cells.• Produced with end-sequenced ORF clone |
| Purity: | > 80 % as determined by SDS-PAGE and Coomassie blue staining |

Target Details

| | |
|-------------------|--|
| Target: | SEC14L2 |
| Alternative Name: | Sec14l2 (SEC14L2 Products) |
| Background: | Carrier protein. Binds to some hydrophobic molecules and promotes their transfer between the different cellular sites. Binds with high affinity to alpha-tocopherol. Also binds with a weaker affinity to other tocopherols and to tocotrienols. May have a transcriptional activatory activity via its association with alpha-tocopherol. Probably recognizes and binds some squalene |

Target Details

structure, suggesting that it may regulate cholesterol biosynthesis by increasing the transfer of squalene to a metabolic active pool in the cell. [UniProtKB/Swiss-Prot Function]

Molecular Weight: 46 kDa

NCBI Accession: [NP_036561](#)

Application Details

Application Notes: Recombinant human proteins can be used for:
Native antigens for optimized antibody production
Positive controls in ELISA and other antibody assays

Comment: The tag is located at the C-terminal.

Restrictions: For Research Use only

Handling

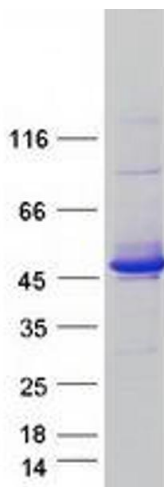
Concentration: 50 µg/mL

Buffer: 25 mM Tris.HCl, pH 7.3, 100 mM glycine, 10 % glycerol.

Storage: -80 °C

Storage Comment: Store at -80°C. Thaw on ice, aliquot to individual single-use tubes, and then re-freeze immediately. Only 2-3 freeze thaw cycles are recommended.

Images



Western Blotting

Image 1. Validation with Western Blot