



[Go to Product page](#)

Datasheet for ABIN2731574

SEC24B Protein (Transcript Variant 2) (Myc-DYKDDDDK Tag)

1 Image

Overview

Quantity:	20 µg
Target:	SEC24B
Protein Characteristics:	Transcript Variant 2
Origin:	Human
Source:	HEK-293 Cells
Protein Type:	Recombinant
Purification tag / Conjugate:	This SEC24B protein is labelled with Myc-DYKDDDDK Tag.
Application:	Antibody Production (AbP), Standard (STD)

Product Details

Characteristics:	<ul style="list-style-type: none"> • Recombinant human SEC24B (transcript variant 2) protein expressed in HEK293 cells. • Produced with end-sequenced ORF clone
Purity:	> 80 % as determined by SDS-PAGE and Coomassie blue staining

Target Details

Target:	SEC24B
Alternative Name:	Sec24b (SEC24B Products)
Background:	The protein encoded by this gene is a member of the SEC24 subfamily of the SEC23/SEC24 family, which is involved in vesicle trafficking. The encoded protein is thought to be a cargo-binding component of the COPII vesicle, and is thought to be involved in the transport of secretory proteins from the endoplasmic reticulum to the Golgi apparatus. Mutations in this

Target Details

gene have been associated with neural tube defects, and are thought to be a result of a disruption in interactions with the protein encoded by the VANGL planar cell polarity protein 2 (VANGL2) gene. Alternative splicing results in multiple transcript variants encoding different isoforms.

Molecular Weight: 133.4 kDa

NCBI Accession: [NP_001036199](#)

Application Details

Application Notes: Recombinant human proteins can be used for:
Native antigens for optimized antibody production
Positive controls in ELISA and other antibody assays

Comment: The tag is located at the C-terminal.

Restrictions: For Research Use only

Handling

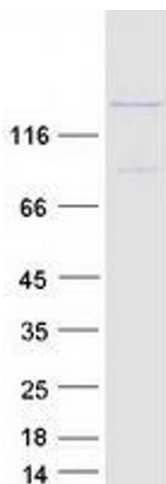
Concentration: 50 µg/mL

Buffer: 25 mM Tris.HCl, pH 7.3, 100 mM glycine, 10 % glycerol.

Storage: -80 °C

Storage Comment: Store at -80°C. Thaw on ice, aliquot to individual single-use tubes, and then re-freeze immediately. Only 2-3 freeze thaw cycles are recommended.

Images



Western Blotting

Image 1. Validation with Western Blot