

Datasheet for ABIN2731631

Senataxin (SETX) protein (Myc-DYKDDDDK Tag)



[Go to Product page](#)

1 Image

Overview

Quantity:	20 µg
Target:	Senataxin (SETX)
Origin:	Human
Source:	HEK-293T Cells
Protein Type:	Recombinant
Purification tag / Conjugate:	Myc-DYKDDDDK Tag
Application:	Antibody Production (AbP), Standard (STD)

Product Details

Characteristics:	<ul style="list-style-type: none"> • Recombinant human Senataxin (SETX) protein expressed in HEK293 cell. • Produced with end-sequenced ORF clone
Purity:	> 80 % as determined by SDS-PAGE and Coomassie blue staining

Target Details

Target:	Senataxin (SETX)
Abstract:	SETX Products
Background:	<p>This gene encodes a protein named for its homology to the Sen1p protein of fungi which has RNA helicase activity encoded by a domain at the C-terminal end of the protein. The protein encoded by this gene contains a DNA/RNA helicase domain at its C-terminal end which suggests that it may be involved in both DNA and RNA processing. Mutations in this gene have been associated with ataxia-ocular apraxia-2 (AOA2) and an autosomal dominant form of</p>

Target Details

	juvenile amyotrophic lateral sclerosis (ALS4).
Molecular Weight:	57.8 kDa
NCBI Accession:	NP_055861

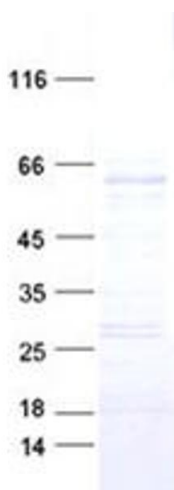
Application Details

Application Notes:	Recombinant human proteins can be used for: Native antigens for optimized antibody production Positive controls in ELISA and other antibody assays
Comment:	The tag is located at the C-terminal.
Restrictions:	For Research Use only

Handling

Concentration:	50 µg/mL
Buffer:	25 mM Tris-HCl, pH 7.3, 100 mM glycine, and 10 % glycerol.
Storage:	-80 °C
Storage Comment:	Store at -80°C. Thaw on ice, aliquot to individual single-use tubes, and then re-freeze immediately. Only 2-3 freeze thaw cycles are recommended.

Images



Western Blotting

Image 1. Validation with Western Blot