

Datasheet for ABIN2731651

**SENP7 Protein (Transcript Variant 2) (His tag)**[Go to Product page](#)**1** Image

## Overview

Quantity:	10 µg
Target:	SENP7
Protein Characteristics:	Transcript Variant 2
Origin:	Human
Source:	Escherichia coli (E. coli)
Protein Type:	Recombinant
Purification tag / Conjugate:	This SENP7 protein is labelled with His tag.
Application:	Antibody Production (AbP), Standard (STD)

## Product Details

Characteristics:	<ul style="list-style-type: none"><li>• Recombinant human SENP7 (transcript variant 2) protein expressed in E. coli.</li><li>• Produced with end-sequenced ORF clone</li></ul>
Purity:	> 95 % as determined by SDS-PAGE and Coomassie blue staining
Endotoxin Level:	< 0.1 EU per µg protein as determined by LAL test

## Target Details

Target:	SENP7
Alternative Name:	Senp7 ( <a href="#">SENP7 Products</a> )
Background:	The reversible posttranslational modification of proteins by the addition of small ubiquitin-like SUMO proteins (see SUMO1 MIM 601912) is required for many cellular processes. SUMO-

## Target Details

specific proteases, such as SENP7, process SUMO precursors to generate a C-terminal diglycine motif required for the conjugation reaction. They also display isopeptidase activity for deconjugation of SUMO-conjugated substrates (Lima and Reverter, 2008 [PubMed 18799455]).[supplied by OMIM, Jun 2009]

Molecular Weight: 27.3 kDa

NCBI Accession: [NP\\_001070671](#)

## Application Details

Application Notes: Recombinant human proteins can be used for:  
Native antigens for optimized antibody production  
Positive controls in ELISA and other antibody assays

Comment: The tag is located at the N-terminal.

Restrictions: For Research Use only

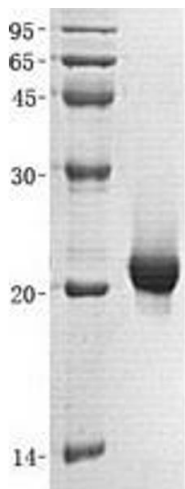
## Handling

Concentration: 50 µg/mL

Buffer: 20 mM HEPES, 5 % Glycerol, pH 7.4. Avoid repeated freeze-thaw cycles. Stable for at least 3 months from receipt of products under proper storage and handling conditions.

Storage: -80 °C

Storage Comment: Store at -80°C. Thaw on ice, aliquot to individual single-use tubes, and then re-freeze immediately. Only 2-3 freeze thaw cycles are recommended.



Western Blotting

**Image 1.** Validation with Western Blot