

Datasheet for ABIN2731773

**SERPINB2 Protein (Transcript Variant 2)**[Go to Product page](#)**1** Image

## Overview

Quantity:	10 µg
Target:	SERPINB2
Protein Characteristics:	Transcript Variant 2
Origin:	Human
Source:	Escherichia coli (E. coli)
Protein Type:	Recombinant
Biological Activity:	Active
Application:	Functional Studies (Func), Antibody Production (AbP), Standard (STD), Protein Interaction (PI)

## Product Details

Specificity:	Optimal preservation of protein structure, post-translational modifications and functions.
Characteristics:	<ul style="list-style-type: none"><li>• Recombinant human SERPINB2 / PAI2 (transcript variant 2) protein expressed in E. coli.</li><li>• Produced with end-sequenced ORF clone</li><li>• Tested for bioactivity.</li></ul>
Purity:	> 95 % as determined by SDS-PAGE and Coomassie blue staining
Endotoxin Level:	Endotoxin level is <0.1 ng/µg of protein (<1EU/µg).
Biological Activity Comment:	Determined by its inhibitory effect against single chain tPA induced cleavage of a chromogenic substrate in Imidazole Buffer at 37C. Half maximal inhibition against 1.0 ug/mL of single chain tPA was obtained at a concentration of 1.0 ug/mL

## Target Details

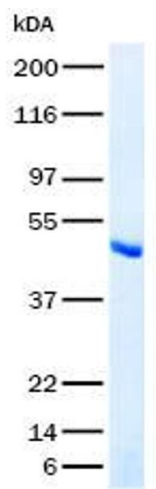
Target:	SERPINB2
Alternative Name:	Serpib2,pai2 ( <a href="#">SERPINB2 Products</a> )
Target Type:	Amino Acid
Background:	Inhibits urokinase-type plasminogen activator. The monocyte derived PAI-2 is distinct from the endothelial cell-derived PAI-1. [UniProtKB/Swiss-Prot Function]
Molecular Weight:	45.6 kDa
NCBI Accession:	<a href="#">NP_002566</a>
Pathways:	<a href="#">Autophagy</a>

## Application Details

Application Notes:	Recombinant human proteins can be used for: Native antigens for optimized antibody production Positive controls in ELISA and other antibody assays Protein-protein interaction In vitro biochemical assays and cell-based functional assays
Restrictions:	For Research Use only

## Handling

Buffer:	Lyophilized from a 0.2 µM filtered solution of 20 mM phosphate buffer, 100 mM NaCl, pH 7.2
Handling Advice:	Resuspend the protein in the desired concentration in proper buffer
Storage:	-80 °C
Storage Comment:	Store at -80°C. Thaw on ice, aliquot to individual single-use tubes, and then re-freeze immediately. Only 2-3 freeze thaw cycles are recommended.



Western Blotting

**Image 1.** Validation with Western Blot