

Datasheet for ABIN2731830
anti-SERPINE2 antibody[Go to Product page](#)

3 Images

1 Publication

Overview

Quantity:	0.1 mL
Target:	SERPINE2
Reactivity:	Human
Host:	Mouse
Clonality:	Monoclonal
Conjugate:	This SERPINE2 antibody is un-conjugated
Application:	Western Blotting (WB), Immunohistochemistry (IHC), Flow Cytometry (FACS)

Product Details

Immunogen:	Full length human recombinant protein of human SERPINE2(NP_006207) produced in HEK293T cell.
Clone:	2C9
Isotype:	IgG1
Characteristics:	Homo sapiens serpin peptidase inhibitor, clade E (nexin, plasminogen activator inhibitor type 1), member 2 (SERPINE2), transcript variant 1
Purification:	Purified from mouse ascites fluids by affinity chromatography

Target Details

Target:	SERPINE2
Alternative Name:	SERPINE2 (SERPINE2 Products)

Target Details

Molecular Weight:	41.8 kDa
Gene ID:	5270
NCBI Accession:	NM_006216
HGNC:	5270

Application Details

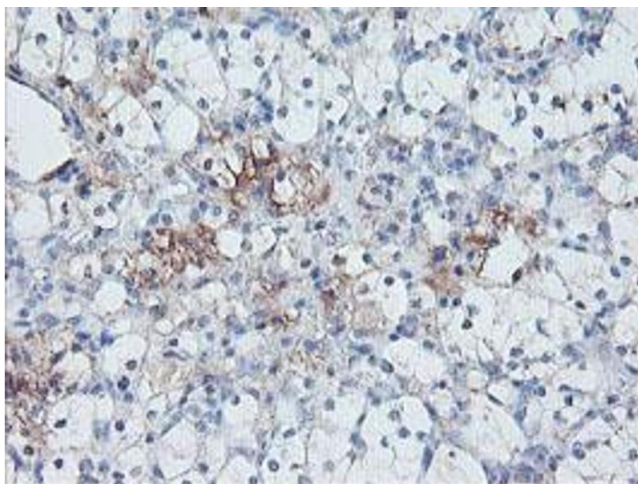
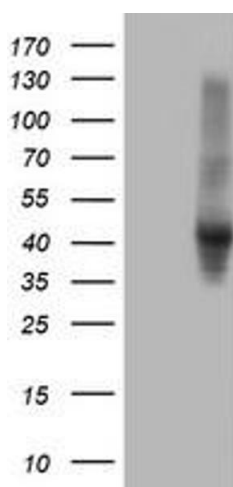
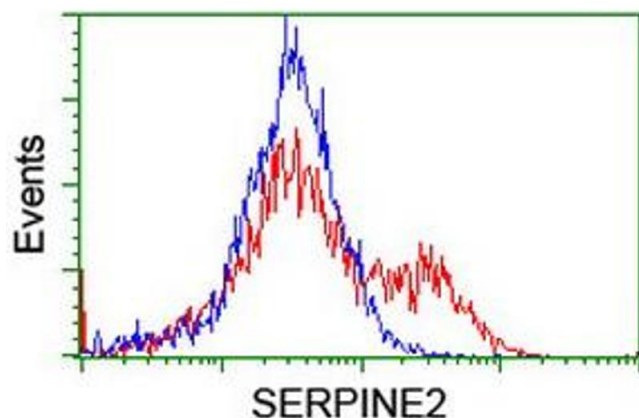
Application Notes:	WB 1:2000, IHC 1:150, FLOW 1:100,
Comment:	The concentration of the product may vary between diferrent lots.
Restrictions:	For Research Use only

Handling

Format:	Liquid
Concentration:	0.5-1.0 mg/mL
Buffer:	PBS (PH 7.3) containing 1 % BSA, 50 % glycerol and 0.02 % sodium azide.
Preservative:	Sodium azide
Precaution of Use:	This product contains sodium azide: a POISONOUS AND HAZARDOUS SUBSTANCE which should be handled by trained staff only.
Storage:	-20 °C

Publications

Product cited in:	Perego, Maurer, Wang, Shaffer, Müller, Parapatics, Li, Hristova, Shin, Keeney, Liu, Xu, Raj, Jensen, Bennett, Wagner, Somasundaram, Herlyn: "A slow-cycling subpopulation of melanoma cells with highly invasive properties." in: Oncogene , Vol. 37, Issue 3, pp. 302-312, (2018) (PubMed).
-------------------	---



Flow Cytometry

Image 1. HEK293T cells transfected with either RC204904 overexpress plasmid (Red) or empty vector control plasmid (Blue) were immunostained by anti-SERPINE2 antibody (ABIN2455738), and then analyzed by flow cytometry.

Western Blotting

Image 2. HEK293T cells were transfected with the pCMV6-ENTRY control (Left lane) or pCMV6-ENTRY SERPINE2 (Right lane) cDNA for 48 hrs and lysed. Equivalent amounts of cell lysates (5 µg per lane) were separated by SDS-PAGE and immunoblotted with anti-SERPINE2.

Immunohistochemistry

Image 3. Immunohistochemical staining of paraffin-embedded Carcinoma of Human kidney tissue using anti-SERPINE2 mouse monoclonal antibody. (ABIN2455738)