

Datasheet for ABIN2731831  
**anti-SERPINE2 antibody**

## 3 Images

[Go to Product page](#)

## Overview

Quantity:	0.1 mL
Target:	SERPINE2
Reactivity:	Human, Monkey
Host:	Mouse
Clonality:	Monoclonal
Application:	Western Blotting (WB), Immunohistochemistry (IHC), Flow Cytometry (FACS)

## Product Details

Immunogen:	Full length human recombinant protein of human SERPINE2(NP_006207) produced in HEK293T cell.
Clone:	6F3
Isotype:	IgG1
Characteristics:	Homo sapiens serpin peptidase inhibitor, clade E (nexin, plasminogen activator inhibitor type 1), member 2 (SERPINE2), transcript variant 1
Purification:	Purified from mouse ascites fluids by affinity chromatography

## Target Details

Target:	SERPINE2
Alternative Name:	SERPINE2 ( <a href="#">SERPINE2 Products</a> )
Molecular Weight:	41.8 kDa

## Target Details

Gene ID:	5270
NCBI Accession:	<a href="#">NM_006216</a>
HGNC:	5270

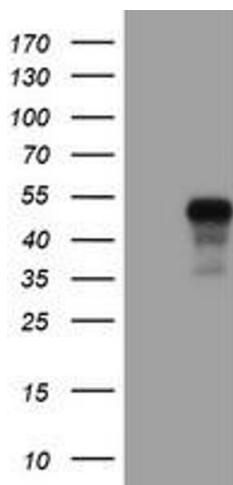
## Application Details

Application Notes:	WB 1:500~2000, IHC 1:150, FLOW 1:100,
Comment:	The concentration of the product may vary between diferrent lots.
Restrictions:	For Research Use only

## Handling

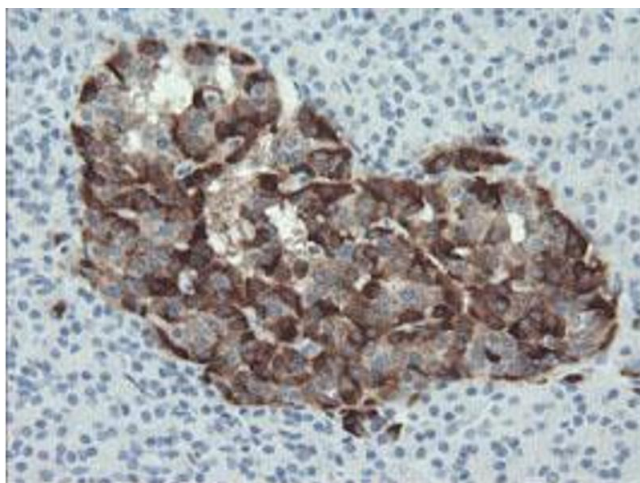
Format:	Liquid
Concentration:	0.5-1.0 mg/mL
Buffer:	PBS (PH 7.3) containing 1 % BSA, 50 % glycerol and 0.02 % sodium azide.
Preservative:	Sodium azide
Precaution of Use:	This product contains sodium azide: a POISONOUS AND HAZARDOUS SUBSTANCE which should be handled by trained staff only.
Storage:	-20 °C

## Images



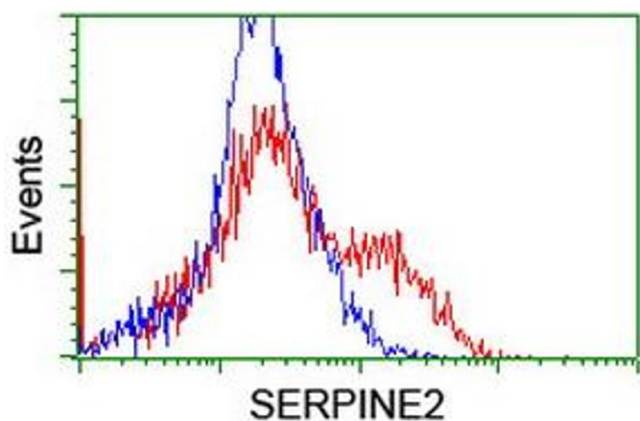
### Western Blotting

**Image 1.** HEK293T cells were transfected with the pCMV6-ENTRY control (Left lane) or pCMV6-ENTRY SERPINE2 (Right lane) cDNA for 48 hrs and lysed. Equivalent amounts of cell lysates (5 µg per lane) were separated by SDS-PAGE and immunoblotted with anti-SERPINE2.



#### Immunohistochemistry

**Image 2.** Immunohistochemical staining of paraffin-embedded Human pancreas tissue using anti-SERPINE2 mouse monoclonal antibody. (ABIN2455780)



#### Flow Cytometry

**Image 3.** HEK293T cells transfected with either RC204904 overexpress plasmid (Red) or empty vector control plasmid (Blue) were immunostained by anti-SERPINE2 antibody (ABIN2455780), and then analyzed by flow cytometry.