



[Go to Product page](#)

Datasheet for ABIN2731847

SAA1 Protein (Transcript Variant 1)

1 Image

Overview

Quantity:	50 µg
Target:	SAA1
Protein Characteristics:	Transcript Variant 1
Origin:	Human
Source:	Escherichia coli (E. coli)
Protein Type:	Recombinant
Biological Activity:	Active
Application:	Functional Studies (Func), Antibody Production (AbP), Standard (STD), Protein Interaction (PI)

Product Details

Specificity:	Optimal preservation of protein structure, post-translational modifications and functions.
Characteristics:	<ul style="list-style-type: none">• Recombinant human Serum amyloid A1 (SAA1), transcript variant 1. (transcript variant 1) protein expressed in E. coli.• Produced with end-sequenced ORF clone• Tested for bioactivity.
Purity:	> 95 % as determined by SDS-PAGE and Coomassie blue staining
Endotoxin Level:	Endotoxin level is <0.1 ng/µg of protein (<1EU/µg).
Biological Activity Comment:	Tested by its ability to down-regulate lipid biosynthesis in aortic smooth muscle cells. The effective concentration was found to be 4 µM.* * Schreiber, BM. et al. Biochem J. 1999 Nov 15 344 Pt 1:7-13

Target Details

Target: SAA1

Abstract: [SAA1 Products](#)

Background: This gene encodes a member of the serum amyloid A family of apolipoproteins. The encoded preproprotein is proteolytically processed to generate the mature protein. This protein is a major acute phase protein that is highly expressed in response to inflammation and tissue injury. This protein also plays an important role in HDL metabolism and cholesterol homeostasis. High levels of this protein are associated with chronic inflammatory diseases including atherosclerosis, rheumatoid arthritis, Alzheimer's disease and Crohn's disease. This protein may also be a potential biomarker for certain tumors. Alternate splicing results in multiple transcript variants that encode the same protein. A pseudogene of this gene is found on chromosome 11.

Molecular Weight: 12 kDa

NCBI Accession: [NP_000322](#)

Pathways: [Toll-Like Receptors Cascades](#)

Application Details

Application Notes: Recombinant human proteins can be used for:
Native antigens for optimized antibody production
Positive controls in ELISA and other antibody assays
Protein-protein interaction
In vitro biochemical assays and cell-based functional assays

Restrictions: For Research Use only

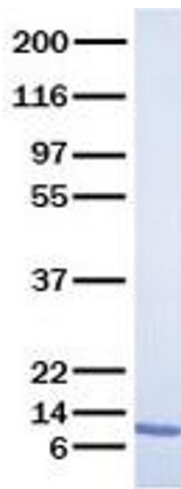
Handling

Buffer: Lyophilized from a 0.2 μ M filtered solution of 20 mM phosphate buffer, 100 mM NaCl, pH 7.2

Handling Advice: Resuspend the protein in the desired concentration in proper buffer

Storage: -80 °C

Storage Comment: Store at -80°C. Thaw on ice, aliquot to individual single-use tubes, and then re-freeze immediately. Only 2-3 freeze thaw cycles are recommended.



Western Blotting

Image 1. Validation with Western Blot