

Datasheet for ABIN2731853  
**APCS Protein (Myc-DYKDDDDK Tag)**



[Go to Product page](#)

1 Image

## Overview

Quantity:	20 µg
Target:	APCS
Origin:	Human
Source:	HEK-293 Cells
Protein Type:	Recombinant
Purification tag / Conjugate:	This APCS protein is labelled with Myc-DYKDDDDK Tag.
Application:	Antibody Production (AbP), Standard (STD)

## Product Details

Characteristics:	<ul style="list-style-type: none"><li>• Recombinant human Serum amyloid P-component protein expressed in HEK293 cells.</li><li>• Produced with end-sequenced ORF clone</li></ul>
------------------	--

Purity:	> 80 % as determined by SDS-PAGE and Coomassie blue staining
---------	--

## Target Details

Target:	APCS
Alternative Name:	Serum Amyloid P-Component ( <a href="#">APCS Products</a> )
Background:	The protein encoded by this gene is a glycoprotein, belonging to the pentraxin family of proteins, which has a characteristic pentameric organization. These family members have considerable sequence homology which is thought to be the result of gene duplication. The binding of the encoded protein to proteins in the pathological amyloid cross-beta fold suggests its possible role as a chaperone. This protein is also thought to control the degradation of

## Target Details

chromatin. It has been demonstrated that this protein binds to apoptotic cells at an early stage, which raises the possibility that it is involved in dealing with apoptotic cells in vivo.

Molecular Weight: 23.2 kDa

NCBI Accession: [NP\\_001630](#)

## Application Details

Application Notes: Recombinant human proteins can be used for:  
Native antigens for optimized antibody production  
Positive controls in ELISA and other antibody assays

Comment: The tag is located at the C-terminal.

Restrictions: For Research Use only

## Handling

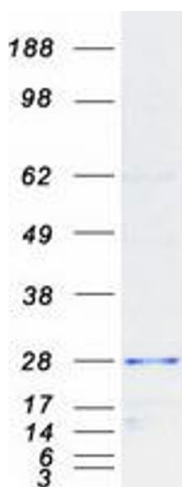
Concentration: 50 µg/mL

Buffer: 25 mM Tris.HCl, pH 7.3, 100 mM glycine, 10 % glycerol.

Storage: -80 °C

Storage Comment: Store at -80°C. Thaw on ice, aliquot to individual single-use tubes, and then re-freeze immediately. Only 2-3 freeze thaw cycles are recommended.

## Images



### Western Blotting

**Image 1.** Validation with Western Blot