

Datasheet for ABIN2731971

SH3BP1 Protein (Myc-DYKDDDDK Tag)



[Go to Product page](#)

1 Image

Overview

Quantity:	20 µg
Target:	SH3BP1
Origin:	Human
Source:	HEK-293 Cells
Protein Type:	Recombinant
Purification tag / Conjugate:	This SH3BP1 protein is labelled with Myc-DYKDDDDK Tag.
Application:	Antibody Production (AbP), Standard (STD)

Product Details

Characteristics:	<ul style="list-style-type: none"> • Recombinant human SH3BP1 protein expressed in HEK293 cells. • Produced with end-sequenced ORF clone
Purity:	> 80 % as determined by SDS-PAGE and Coomassie blue staining

Target Details

Target:	SH3BP1
Alternative Name:	Sh3bp1 (SH3BP1 Products)
Background:	<p>This gene encodes a member of the Rho GTPase activating protein (RhoGAP) family. The encoded protein regulates Rac signaling and plays a role in cytoskeletal dynamics, cell motility and epithelial junction formation. This protein's association with the exocyst complex, which tethers secretory vesicles to the plasma membrane, has been demonstrated to be important in cell motility. In a distinct complex, this protein has been shown to regulate</p>

Target Details

epithelial junction formation and morphogenesis. By interacting with the Plexin-D1 cell surface receptor, this protein mediates changes in the cytoskeleton in response to semaphorin binding. This protein may promote metastasis in human liver cancer cells and tissues.

Molecular Weight:	75.5 kDa
NCBI Accession:	NP_061830

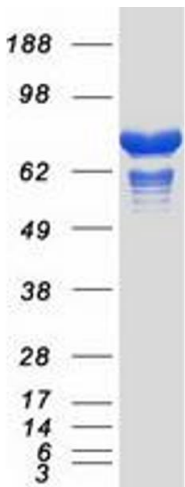
Application Details

Application Notes:	Recombinant human proteins can be used for: Native antigens for optimized antibody production Positive controls in ELISA and other antibody assays
Comment:	The tag is located at the C-terminal.
Restrictions:	For Research Use only

Handling

Concentration:	50 µg/mL
Buffer:	25 mM Tris.HCl, pH 7.3, 100 mM glycine, 10 % glycerol.
Storage:	-80 °C
Storage Comment:	Store at -80°C. Thaw on ice, aliquot to individual single-use tubes, and then re-freeze immediately. Only 2-3 freeze thaw cycles are recommended.

Images



Western Blotting

Image 1. Validation with Western Blot