

Datasheet for ABIN2732165
SLC25A42 Protein (Myc-DYKDDDDK Tag)



[Go to Product page](#)

1 Image

Overview

Quantity:	20 µg
Target:	SLC25A42
Origin:	Human
Source:	HEK-293 Cells
Protein Type:	Recombinant
Purification tag / Conjugate:	This SLC25A42 protein is labelled with Myc-DYKDDDDK Tag.
Application:	Antibody Production (AbP), Standard (STD)

Product Details

Characteristics:	<ul style="list-style-type: none">• Recombinant human SLC25A42 protein expressed in HEK293 cells.• Produced with end-sequenced ORF clone
Purity:	> 80 % as determined by SDS-PAGE and Coomassie blue staining

Target Details

Target:	SLC25A42
Alternative Name:	Slc25a42 (SLC25A42 Products)
Background:	This gene encodes a solute carrier family 25 protein. Solute carrier family 25 proteins are localized to mitochondria and play critical roles in the transport of molecules across the inner mitochondrial membrane. The encoded protein is a mitochondrial transporter for coenzyme A (CoA) and adenosine 3',5'-diphosphate.
Molecular Weight:	35.2 kDa

Target Details

NCBI Accession: [NP_848621](#)

Application Details

Application Notes: Recombinant human proteins can be used for:
Native antigens for optimized antibody production
Positive controls in ELISA and other antibody assays

Comment: The tag is located at the C-terminal.

Restrictions: For Research Use only

Handling

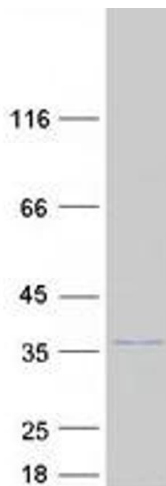
Concentration: 50 µg/mL

Buffer: 25 mM Tris.HCl, pH 7.3, 100 mM glycine, 10 % glycerol.

Storage: -80 °C

Storage Comment: Store at -80°C. Thaw on ice, aliquot to individual single-use tubes, and then re-freeze immediately. Only 2-3 freeze thaw cycles are recommended.

Images



Western Blotting

Image 1. Validation with Western Blot