

Datasheet for ABIN2732180

SLC7A4 Protein (Myc-DYKDDDDK Tag)[Go to Product page](#)**1** Image

Overview

| | |
|-------------------------------|--|
| Quantity: | 20 µg |
| Target: | SLC7A4 |
| Origin: | Human |
| Source: | HEK-293 Cells |
| Protein Type: | Recombinant |
| Purification tag / Conjugate: | This SLC7A4 protein is labelled with Myc-DYKDDDDK Tag. |
| Application: | Antibody Production (AbP), Standard (STD) |

Product Details

| | |
|------------------|--|
| Characteristics: | <ul style="list-style-type: none">• Recombinant human SLC7A4 / CAT4 protein expressed in HEK293 cells.• Produced with end-sequenced ORF clone |
| Purity: | > 80 % as determined by SDS-PAGE and Coomassie blue staining |

Target Details

| | |
|-------------------|--|
| Target: | SLC7A4 |
| Alternative Name: | Slc7a4,cat4 (SLC7A4 Products) |
| Background: | Involved in the transport of the cationic amino acids (arginine, lysine and ornithine). [UniProtKB/Swiss-Prot Function] |
| Molecular Weight: | 68.1 kDa |
| NCBI Accession: | NP_004164 |

Application Details

Application Notes: Recombinant human proteins can be used for:
Native antigens for optimized antibody production
Positive controls in ELISA and other antibody assays

Comment: The tag is located at the C-terminal.

Restrictions: For Research Use only

Handling

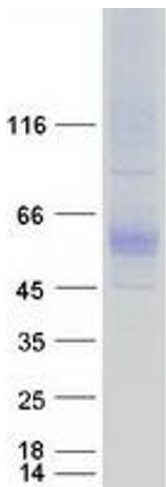
Concentration: 50 µg/mL

Buffer: 25 mM Tris.HCl, pH 7.3, 100 mM glycine, 10 % glycerol.

Storage: -80 °C

Storage Comment: Store at -80°C. Thaw on ice, aliquot to individual single-use tubes, and then re-freeze immediately. Only 2-3 freeze thaw cycles are recommended.

Images



Western Blotting

Image 1. Validation with Western Blot