

Datasheet for ABIN2732221

**SMAD3 Protein (Transcript Variant 1) (Myc-DYKDDDDK Tag)**[Go to Product page](#)**2** Images

## Overview

Quantity:	20 µg
Target:	SMAD3
Protein Characteristics:	Transcript Variant 1
Origin:	Human
Source:	HEK-293 Cells
Protein Type:	Recombinant
Biological Activity:	Active
Purification tag / Conjugate:	This SMAD3 protein is labelled with Myc-DYKDDDDK Tag.
Application:	Antibody Production (AbP), Functional Studies (Func), Protein Interaction (PI), Standard (STD)

## Product Details

Specificity:	Optimal preservation of protein structure, post-translational modifications and functions.
Characteristics:	<ul style="list-style-type: none"><li>• Recombinant human SMAD3 (transcript variant 1) protein expressed in HEK293 cells.</li><li>• Produced with end-sequenced ORF clone</li><li>• Tested for bioactivity.</li></ul>
Purity:	> 80 % as determined by SDS-PAGE and Coomassie blue staining
Biological Activity Comment:	SMAD3 Activity Verified in a DNA-binding Assay.;SMAD3 Activity Verified in a DNA-binding Assay:

## Target Details

Target:	SMAD3
---------	-------

## Target Details

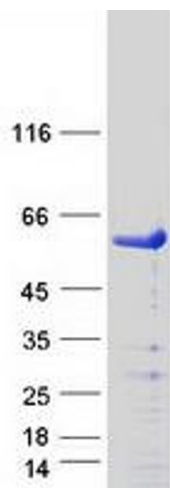
Alternative Name:	Smad3 ( <a href="#">SMAD3 Products</a> )
Background:	The protein encoded by this gene belongs to the SMAD, a family of proteins similar to the gene products of the Drosophila gene 'mothers against decapentaplegic' (Mad) and the C. elegans gene Sma. SMAD proteins are signal transducers and transcriptional modulators that mediate multiple signaling pathways. This protein functions as a transcriptional modulator activated by transforming growth factor-beta and is thought to play a role in the regulation of carcinogenesis.
Molecular Weight:	47.9 kDa
NCBI Accession:	<a href="#">NP_005893</a>
Pathways:	<a href="#">Cell Division Cycle</a> , <a href="#">Chromatin Binding</a> , <a href="#">Cell-Cell Junction Organization</a> , <a href="#">Positive Regulation of Endopeptidase Activity</a> , <a href="#">Autophagy</a>

## Application Details

Application Notes:	Recombinant human proteins can be used for: Native antigens for optimized antibody production Positive controls in ELISA and other antibody assays Protein-protein interaction In vitro biochemical assays and cell-based functional assays
Comment:	The tag is located at the C-terminal.
Restrictions:	For Research Use only

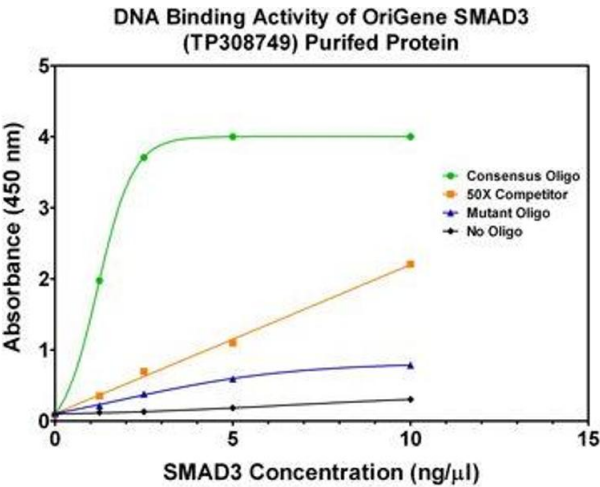
## Handling

Concentration:	> 50 µg/mL
Buffer:	25 mM Tris.HCl, pH 7.3, 100 mM glycine, 10 % glycerol.
Storage:	-80 °C
Storage Comment:	Store at -80°C. Thaw on ice, aliquot to individual single-use tubes, and then re-freeze immediately. Only 2-3 freeze thaw cycles are recommended.



Western Blotting

Image 1. Validation with Western Blot



Activity Assay

Image 2. Bioactivity measured with Activity Assay