

Datasheet for ABIN2732297

NAPB Protein (Myc-DYKDDDDK Tag)[Go to Product page](#)**1** Image

Overview

Quantity:	20 µg
Target:	NAPB
Origin:	Human
Source:	HEK-293 Cells
Protein Type:	Recombinant
Purification tag / Conjugate:	This NAPB protein is labelled with Myc-DYKDDDDK Tag.
Application:	Antibody Production (AbP), Standard (STD)

Product Details

Characteristics:	<ul style="list-style-type: none">• Recombinant human SNAP beta protein expressed in HEK293 cells.• Produced with end-sequenced ORF clone
Purity:	> 80 % as determined by SDS-PAGE and Coomassie blue staining

Target Details

Target:	NAPB
Alternative Name:	Snap beta (NAPB Products)
Background:	This gene encodes a member of the soluble N-ethyl-maleimide-sensitive fusion attachment protein (SNAP) family. SNAP proteins play a critical role in the docking and fusion of vesicles to target membranes as part of the 20S NSF-SNAP-SNARE complex. This gene encodes the SNAP beta isoform which has been shown to be preferentially expressed in brain tissue. The encoded protein also interacts with the GluR2 α-amino-3-hydroxy-5-methyl-4-isoxazolepropionate

Target Details

	(AMPA) receptor subunit C-terminus and may play a role as a chaperone in the molecular processing of the AMPA receptor.
Molecular Weight:	33.4 kDa
NCBI Accession:	NP_071363
Pathways:	Synaptic Vesicle Exocytosis

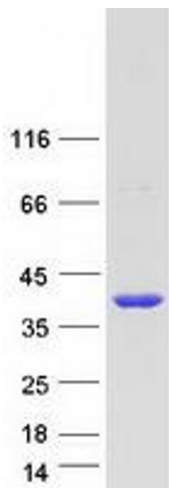
Application Details

Application Notes:	Recombinant human proteins can be used for: Native antigens for optimized antibody production Positive controls in ELISA and other antibody assays
Comment:	The tag is located at the C-terminal.
Restrictions:	For Research Use only

Handling

Concentration:	50 µg/mL
Buffer:	25 mM Tris.HCl, pH 7.3, 100 mM glycine, 10 % glycerol.
Storage:	-80 °C
Storage Comment:	Store at -80°C. Thaw on ice, aliquot to individual single-use tubes, and then re-freeze immediately. Only 2-3 freeze thaw cycles are recommended.

Images



Western Blotting

Image 1. Validation with Western Blot