

Datasheet for ABIN2732402

SNX21 Protein (Transcript Variant 2) (Myc-DYKDDDDK Tag)[Go to Product page](#)**1** Image

Overview

| | |
|-------------------------------|---|
| Quantity: | 20 µg |
| Target: | SNX21 |
| Protein Characteristics: | Transcript Variant 2 |
| Origin: | Human |
| Source: | HEK-293 Cells |
| Protein Type: | Recombinant |
| Purification tag / Conjugate: | This SNX21 protein is labelled with Myc-DYKDDDDK Tag. |
| Application: | Antibody Production (AbP), Standard (STD) |

Product Details

| | |
|------------------|--|
| Characteristics: | <ul style="list-style-type: none">• Recombinant human Sorting nexin-21 (SNX21) (transcript variant 2) protein expressed in HEK293 cells.• Produced with end-sequenced ORF clone |
| Purity: | > 80 % as determined by SDS-PAGE and Coomassie blue staining |

Target Details

| | |
|-------------------|---|
| Target: | SNX21 |
| Alternative Name: | Sorting Nexin-21 (Snx21) (SNX21 Products) |
| Background: | This gene encodes a member of the sorting nexin family. Members of this family contain a phox (PX) domain, which is a phosphoinositide binding domain, and are involved in intracellular trafficking. This protein does not contain a coiled coil region, like some family members. The |

Target Details

| | |
|-------------------|--|
| | specific function of this protein has not been determined. Multiple transcript variants encoding distinct isoforms have been identified for this gene. |
| Molecular Weight: | 21.7 kDa |
| NCBI Accession: | NP_690857 |

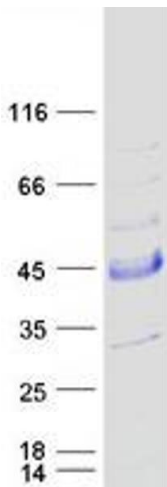
Application Details

| | |
|--------------------|--|
| Application Notes: | Recombinant human proteins can be used for: Native antigens for optimized antibody production Positive controls in ELISA and other antibody assays |
| Comment: | The tag is located at the C-terminal. |
| Restrictions: | For Research Use only |

Handling

| | |
|------------------|---|
| Concentration: | 50 µg/mL |
| Buffer: | 25 mM Tris.HCl, pH 7.3, 100 mM glycine, 10 % glycerol. |
| Storage: | -80 °C |
| Storage Comment: | Store at -80°C. Thaw on ice, aliquot to individual single-use tubes, and then re-freeze immediately. Only 2-3 freeze thaw cycles are recommended. |

Images



Western Blotting

Image 1. Validation with Western Blot