

Datasheet for ABIN2732514

SPATA18 Protein (Myc-DYKDDDDK Tag)



[Go to Product page](#)

1 Image

Overview

Quantity:	20 µg
Target:	SPATA18
Origin:	Human
Source:	HEK-293 Cells
Protein Type:	Recombinant
Purification tag / Conjugate:	This SPATA18 protein is labelled with Myc-DYKDDDDK Tag.
Application:	Antibody Production (AbP), Standard (STD)

Product Details

Characteristics:	<ul style="list-style-type: none"> • Recombinant human SPATA18 protein expressed in HEK293 cells. • Produced with end-sequenced ORF clone
Purity:	> 80 % as determined by SDS-PAGE and Coomassie blue staining

Target Details

Target:	SPATA18
Alternative Name:	Spata18 (SPATA18 Products)
Background:	This gene encodes a p53-inducible protein that is able to induce lysosome-like organelles within mitochondria that eliminate oxidized mitochondrial proteins, thereby contributing to mitochondrial quality control. Dysregulation of mitochondrial quality control is associated with cancer and degenerative diseases. The encoded protein mediates accumulation of the lysosome-like mitochondrial organelles through interaction with B cell lymphoma 2 interacting

Target Details

	protein 3 and B cell lymphoma 2 interacting protein 3 like at the outer mitochondrial membrane, which allows translocation of lysosomal proteins to the mitochondrial matrix from the cytosol. Alternative splicing results in multiple transcript variants.
Molecular Weight:	60.9 kDa
NCBI Accession:	NP_660306

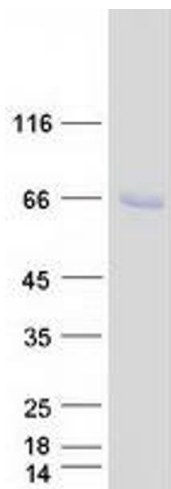
Application Details

Application Notes:	Recombinant human proteins can be used for: Native antigens for optimized antibody production Positive controls in ELISA and other antibody assays
Comment:	The tag is located at the C-terminal.
Restrictions:	For Research Use only

Handling

Concentration:	50 µg/mL
Buffer:	25 mM Tris.HCl, pH 7.3, 100 mM glycine, 10 % glycerol.
Storage:	-80 °C
Storage Comment:	Store at -80°C. Thaw on ice, aliquot to individual single-use tubes, and then re-freeze immediately. Only 2-3 freeze thaw cycles are recommended.

Images



Western Blotting

Image 1. Validation with Western Blot