

Datasheet for ABIN2732592

**SPINK1 Protein**[Go to Product page](#)**1** Image

## Overview

|               |   |
|---------------|---|
| Quantity:     | 10 µg                                     |
| Target:       | SPINK1                                    |
| Origin:       | Human                                     |
| Source:       | HEK-293 Cells                             |
| Protein Type: | Recombinant                               |
| Application:  | Antibody Production (AbP), Standard (STD) |

## Product Details

|                  |   |
|------------------|---|
| Characteristics: | <ul style="list-style-type: none"><li>• Recombinant human SPINK1 protein expressed in HEK293 cells.</li><li>• Produced with end-sequenced ORF clone</li></ul> |
| Purity:          | > 95 % as determined by SDS-PAGE and Coomassie blue staining  |
| Endotoxin Level: | < 0.1 EU per µg protein as determined by LAL test   |

## Target Details

|                   |  |
|-------------------|--|
| Target:           | SPINK1   |
| Alternative Name: | Spink1 ( <a href="#">SPINK1 Products</a> )   |
| Background:       | The protein encoded by this gene is a trypsin inhibitor, which is secreted from pancreatic acinar cells into pancreatic juice. It is thought to function in the prevention of trypsin-catalyzed premature activation of zymogens within the pancreas and the pancreatic duct. Mutations in this gene are associated with hereditary pancreatitis and tropical calcific pancreatitis. |
| Molecular Weight: | 7.3 kDa  |

## Target Details

NCBI Accession: [NP\\_003113](#)

## Application Details

Application Notes: Recombinant human proteins can be used for:  
Native antigens for optimized antibody production  
Positive controls in ELISA and other antibody assays

Restrictions: For Research Use only

## Handling

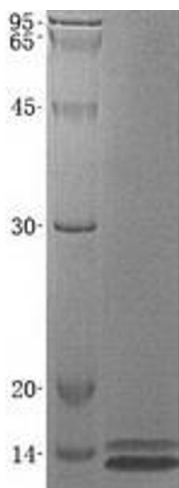
Concentration: 50 µg/mL

Buffer: 20 mM MES, 150 mM NaCl, 2 mM CaCl<sub>2</sub>, 1 mM DTT, 0.05 % Brij35, 10 % Glycerol, pH 6.0. Avoid repeated freeze-thaw cycles. Stable for at least 3 months from receipt of products under proper storage and handling conditions.

Storage: -80 °C

Storage Comment: Store at -80°C. Thaw on ice, aliquot to individual single-use tubes, and then re-freeze immediately. Only 2-3 freeze thaw cycles are recommended.

## Images



### Western Blotting

**Image 1.** Validation with Western Blot