

Datasheet for ABIN2732698

**SSH3 Protein (Myc-DYKDDDDK Tag)**[Go to Product page](#)**1** Image

## Overview

|                               |  |
|-------------------------------|--|
| Quantity:                     | 20 µg  |
| Target:                       | SSH3   |
| Origin:                       | Human  |
| Source:                       | HEK-293 Cells  |
| Protein Type:                 | Recombinant  |
| Purification tag / Conjugate: | This SSH3 protein is labelled with Myc-DYKDDDDK Tag. |
| Application:                  | Antibody Production (AbP), Standard (STD)            |

## Product Details

|                  |   |
|------------------|---|
| Characteristics: | <ul style="list-style-type: none"><li>• Recombinant human SSH3 protein expressed in HEK293 cells.</li><li>• Produced with end-sequenced ORF clone</li></ul> |
| Purity:          | > 80 % as determined by SDS-PAGE and Coomassie blue staining  |

## Target Details

|                   |  |
|-------------------|--|
| Target:           | SSH3   |
| Alternative Name: | Ssh3 ( <a href="#">SSH3 Products</a> )   |
| Background:       | The ADF (actin-depolymerizing factor)/cofilin family (see MIM 601442) is composed of stimulus-responsive mediators of actin dynamics. ADF/cofilin proteins are inactivated by kinases such as LIM domain kinase-1 (LIMK1 MIM 601329). The SSH family appears to play a role in actin dynamics by reactivating ADF/cofilin proteins in vivo (Niwa et al., 2002 [PubMed 11832213]).[supplied by OMIM, Mar 2008]. |

## Target Details

|                   |                           |
|-------------------|---------------------------|
| Molecular Weight: | 72.8 kDa                  |
| NCBI Accession:   | <a href="#">NP_060327</a> |

## Application Details

|                    |  |
|--------------------|--|
| Application Notes: | Recombinant human proteins can be used for:<br>Native antigens for optimized antibody production<br>Positive controls in ELISA and other antibody assays |
|--------------------|--|

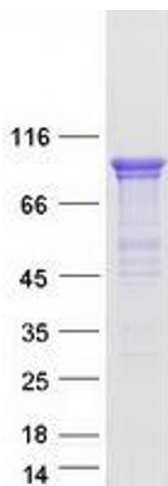
|          |                                       |
|----------|---------------------------------------|
| Comment: | The tag is located at the C-terminal. |
|----------|---------------------------------------|

|               |                       |
|---------------|-----------------------|
| Restrictions: | For Research Use only |
|---------------|-----------------------|

## Handling

|                  |   |
|------------------|---|
| Concentration:   | 50 µg/mL  |
| Buffer:          | 25 mM Tris.HCl, pH 7.3, 100 mM glycine, 10 % glycerol.  |
| Storage:         | -80 °C  |
| Storage Comment: | Store at -80°C. Thaw on ice, aliquot to individual single-use tubes, and then re-freeze immediately. Only 2-3 freeze thaw cycles are recommended. |

## Images



### Western Blotting

**Image 1.** Validation with Western Blot