



Datasheet for ABIN2732962
anti-SULT2A1 antibody



[Go to Product page](#)

3 Images

Overview

Quantity:	0.1 mL
Target:	SULT2A1
Reactivity:	Human
Host:	Mouse
Clonality:	Monoclonal
Application:	Western Blotting (WB), Flow Cytometry (FACS)

Product Details

Immunogen:	Full length human recombinant protein of human SULT2A1 (NP_003158) produced in HEK293T cell.
Clone:	3G4
Isotype:	IgG2b
Purification:	Purified from mouse ascites fluids by affinity chromatography

Target Details

Target:	SULT2A1
Alternative Name:	SULT2A1 (SULT2A1 Products)
Molecular Weight:	33.6 kDa
Gene ID:	6822
NCBI Accession:	NM_003167

Target Details

HGNC: 6822

Pathways: [Steroid Hormone Biosynthesis, Regulation of Lipid Metabolism by PPARAlpha, Monocarboxylic Acid Catabolic Process](#)

Application Details

Application Notes: WB 1:500~2000, FLOW 1:100

Comment: The concentration of the product may vary between different lots.

Restrictions: For Research Use only

Handling

Format: Liquid

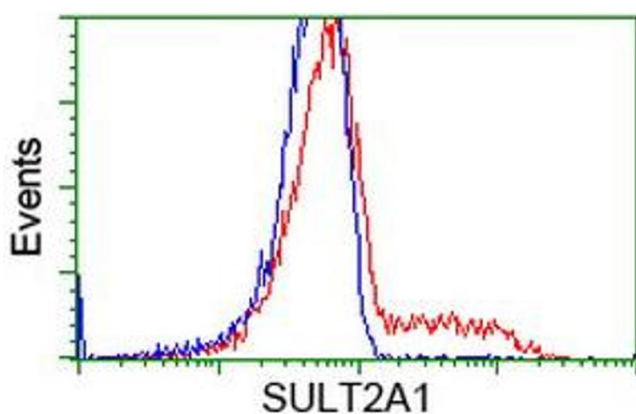
Concentration: 0.5-1.0 mg/mL

Buffer: PBS (PH 7.3) containing 1 % BSA, 50 % glycerol and 0.02 % sodium azide.

Preservative: Sodium azide

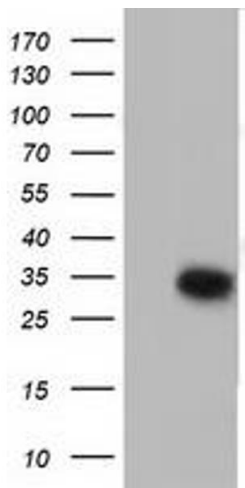
Precaution of Use: This product contains sodium azide: a POISONOUS AND HAZARDOUS SUBSTANCE which should be handled by trained staff only.

Images



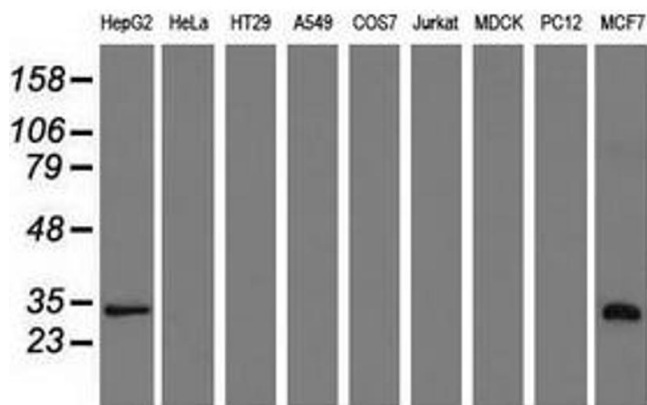
Flow Cytometry

Image 1. HEK293T cells transfected with either RC204737 overexpress plasmid (Red) or empty vector control plasmid (Blue) were immunostained by anti-SULT2A1 antibody (ABIN2453699), and then analyzed by flow cytometry.



Western Blotting

Image 2. HEK293T cells were transfected with the pCMV6-ENTRY control (Left lane) or pCMV6-ENTRY SULT2A1 (Right lane) cDNA for 48 hrs and lysed. Equivalent amounts of cell lysates (5 µg per lane) were separated by SDS-PAGE and immunoblotted with anti-SULT2A1.



Western Blotting

Image 3. Western blot analysis of extracts (35 µg) from 9 different cell lines by using anti-SULT2A1 monoclonal antibody.