

Datasheet for ABIN2732974

SUMF1 Protein**1** Image[Go to Product page](#)

Overview

Quantity:	10 µg
Target:	SUMF1
Origin:	Human
Source:	HEK-293 Cells
Protein Type:	Recombinant
Application:	Antibody Production (AbP), Standard (STD)

Product Details

Characteristics:	<ul style="list-style-type: none">• Recombinant human SUMF1 / FGE protein expressed in HEK293 cells.• Produced with end-sequenced ORF clone
Purity:	> 95 % as determined by SDS-PAGE and Coomassie blue staining
Endotoxin Level:	< 0.1 EU per µg protein as determined by LAL test

Target Details

Target:	SUMF1
Alternative Name:	Sumf1,fge (SUMF1 Products)
Background:	This gene encodes an enzyme that catalyzes the hydrolysis of sulfate esters by oxidizing a cysteine residue in the substrate sulfatase to an active site 3-oxoalanine residue, which is also known as C-alpha-formylglycine. Mutations in this gene cause multiple sulfatase deficiency, a lysosomal storage disorder. Alternative splicing results in multiple transcript variants.
Molecular Weight:	38.3 kDa

Target Details

NCBI Accession: [NP_877437](#)

Application Details

Application Notes: Recombinant human proteins can be used for:
Native antigens for optimized antibody production
Positive controls in ELISA and other antibody assays

Restrictions: For Research Use only

Handling

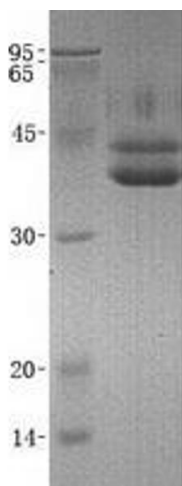
Concentration: 50 µg/mL

Buffer: 20 mM Tris-HCl, 150 mM NaCl, 2 mM CaCl₂, 10 % Glycerol, pH 7.5. Avoid repeated freeze-thaw cycles. Stable for at least 3 months from receipt of products under proper storage and handling conditions.

Storage: -80 °C

Storage Comment: Store at -80°C. Thaw on ice, aliquot to individual single-use tubes, and then re-freeze immediately. Only 2-3 freeze thaw cycles are recommended.

Images



Western Blotting

Image 1. Validation with Western Blot