

Datasheet for ABIN2732984
SUMO3 Protein (His tag)[Go to Product page](#)

1 Image

Overview

Quantity:	10 µg
Target:	SUMO3
Origin:	Human
Source:	Escherichia coli (E. coli)
Protein Type:	Recombinant
Biological Activity:	Active
Purification tag / Conjugate:	This SUMO3 protein is labelled with His tag.
Application:	Antibody Production (AbP), Standard (STD), Functional Studies (Func), Protein Interaction (PI)

Product Details

Specificity:	Optimal preservation of protein structure, post-translational modifications and functions.
Characteristics:	<ul style="list-style-type: none">• Recombinant human SUMO3 / SMT3A protein expressed in E. coli.• Produced with end-sequenced ORF clone• Tested for bioactivity.
Purity:	> 95 % as determined by SDS-PAGE and Coomassie blue staining
Endotoxin Level:	< 0.1 EU per µg protein as determined by LAL test
Biological Activity Comment:	Specific Activity is greater than 800 pmol/min/µg Activity measured by its ability to cleave a fluorogenic peptide substrate, Mca-YVADAPK(Dnp)-OH.

Target Details

Target:	SUMO3
---------	-------

Target Details

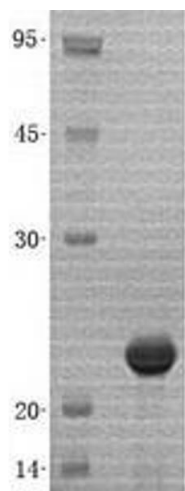
Alternative Name:	Sumo3,smt3a (SUMO3 Products)
Background:	This gene encodes a member of the small ubiquitin-related modifier (SUMO) family of eukaryotic proteins. The encoded protein is covalently conjugated to other proteins via a post-translation modification known as sumoylation. Sumoylation may play a role in a wide variety of cellular processes, including nuclear transport, DNA replication and repair, mitosis, transcriptional regulation, and signal transduction. Alternatively spliced transcript variants encoding distinct proteins have been described.
Molecular Weight:	13.8 kDa
NCBI Accession:	NP_008867

Application Details

Application Notes:	Recombinant human proteins can be used for: Native antigens for optimized antibody production Positive controls in ELISA and other antibody assays Protein-protein interaction In vitro biochemical assays and cell-based functional assays
Comment:	The tag is located at the C-terminal.
Restrictions:	For Research Use only

Handling

Buffer:	Lyophilized from a 0.2 µM filtered solution of 20 mM Phosphate buffer, 150 mM NaCl, pH 7.2. Stable for at least 6 months from date of receipt under proper storage and handling conditions.
Storage:	-80 °C
Storage Comment:	Store at -80°C. Thaw on ice, aliquot to individual single-use tubes, and then re-freeze immediately. Only 2-3 freeze thaw cycles are recommended.



Western Blotting

Image 1. Validation with Western Blot