

Datasheet for ABIN2733359

**TCF3 Protein (His tag)****1** Image[Go to Product page](#)

## Overview

Quantity:	50 µg
Target:	TCF3
Origin:	Human
Source:	Escherichia coli (E. coli)
Protein Type:	Recombinant
Purification tag / Conjugate:	This TCF3 protein is labelled with His tag.
Application:	Antibody Production (AbP), Standard (STD)

## Product Details

Characteristics:	<ul style="list-style-type: none"><li>• Recombinant human TCF3 / E2A (N-term HIS tag, transcript variant 1) protein expressed in E.coli.</li><li>• Produced with end-sequenced ORF clone</li></ul>
Purity:	> 80 % as determined by SDS-PAGE and Coomassie blue staining

## Target Details

Target:	TCF3
Alternative Name:	Tcf3,e2a ( <a href="#">TCF3 Products</a> )
Background:	This gene encodes a member of the E protein (class I) family of helix-loop-helix transcription factors. E proteins activate transcription by binding to regulatory E-box sequences on target genes as heterodimers or homodimers, and are inhibited by heterodimerization with inhibitor of DNA-binding (class IV) helix-loop-helix proteins. E proteins play a critical role in lymphopoiesis,

## Target Details

and the encoded protein is required for B and T lymphocyte development. Deletion of this gene or diminished activity of the encoded protein may play a role in lymphoid malignancies. This gene is also involved in several chromosomal translocations that are associated with lymphoid malignancies including pre-B-cell acute lymphoblastic leukemia (t(119), with PBX1), childhood leukemia (t(1919), with TFPT) and acute leukemia (t(1219), with ZNF384). Alternatively spliced transcript variants encoding multiple isoforms have been observed for this gene, and a pseudogene of this gene is located on the short arm of chromosome 9.

Molecular Weight: 67.4 kDa

NCBI Accession: [NP\\_003191](#)

Pathways: [WNT Signaling](#), [Stem Cell Maintenance](#), [Regulation of Muscle Cell Differentiation](#), [Production of Molecular Mediator of Immune Response](#)

## Application Details

Application Notes: Recombinant human proteins can be used for:  
Native antigens for optimized antibody production  
Positive controls in ELISA and other antibody assays

Comment: The tag is located at the N-terminal.

Restrictions: For Research Use only

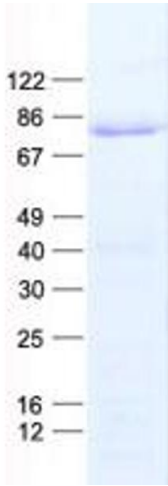
## Handling

Concentration: 50 µg/mL

Buffer: 25 mM Tris, pH 8.0, 150 mM NaCl, 10 % glycerol, 1 % Sarkosyl.

Storage: -80 °C

Storage Comment: Store at -80°C. Thaw on ice, aliquot to individual single-use tubes, and then re-freeze immediately. Only 2-3 freeze thaw cycles are recommended.



Western Blotting

**Image 1.** Validation with Western Blot